

# HabasiLINK® Straight 2" Pitch Belting M5020 Flat Top Heavy Duty 2"

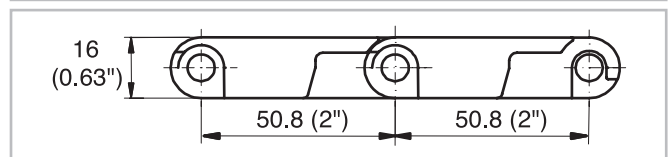
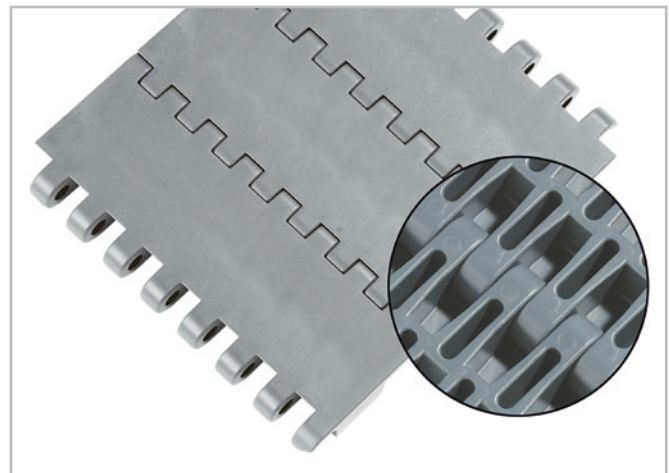


## Description

- 0% open area
- Extremely stiff
- Closed hinge
- Food approved materials available
- Rod diameter 7 mm (0.27")

## Available accessories

- Flights and scoops
- Sideguards
- Hold down devices
- GripTop modules



## Belt data

Belt material		PP	PE	POM	
Rod material		PP	PE	PP	PA
Nominal tensile strength $F'_N$ straight run	N/m	34000	24000	35000	60000
	lb/ft	2329	1644	2398	4110
Temperature range	°C	5 - 105	-70 - 65	5 - 93	-40 - 93
	°F	40 - 220	-94 - 150	40 - 200	-40 - 200
Belt weight $m_B$	kg/m <sup>2</sup>	8.7	9.3	13.5	13.5
	lb/sqft	1.78	1.90	2.77	2.77

Diameter of idling rollers (minimum)		Diameter of support rollers (minimum)		Diameter for gravity take-up and center drive rollers (minimum)		Backbending radius for elevators without sideguards or hold down devices (minimum)		Backbending radius for elevators with sideguards or hold down devices (minimum)	
mm	inch	mm	inch	mm	inch	mm	inch	mm	inch
90	3.5	100	4	150	6	150	6	250	10

Use the largest possible backbending radius for elevators with side guards or hold down devices.

## Standard range of belt widths $b_0$

mm (nom.)	225	300	375	450	525	600	675	750	825	900	975	1050	1125	1200	etc.
inch (nom.)	9	12	15	18	21	24	27	30	33	36	39	42	45	48	etc.

Real belt widths are in most cases 0.1% to 0.3% smaller.

**Standard belt widths** in increments of 75 mm (3"). Non-standard widths are offered in increments of 18.75 mm (0.74"). Non-bricklaid belts 75 mm (3") and 150 mm (6").

**For detailed material properties** refer to the HabasiLINK® Engineering Guidelines or contact your Habasi representative.

**The nominal tensile strength** is valid for 23 °C (73 °F). The admissible tensile force depends on the operating temperature near the drive sprockets. Within the temperature range allowed, the admissible tensile force may vary from 100% to 20% of the nominal tensile strength. For detailed information and correct calculation of effective tensile force refer to the Calculation Guide in the HabasiLINK® Engineering Guidelines.

# HabasitLINK® Straight 2" Pitch Belting M5020 Flat Top Heavy Duty 2"



## **Product liability, application considerations**

If the proper selection and application of Habasit products are not recommended by an authorized Habasit sales specialist, the selection and application of Habasit products, including the related area of product safety, are the responsibility of the customer.

All indications / information are recommendations and believed to be reliable, but no representations, guarantees, or warranties of any kind are made as to their accuracy or suitability for particular applications. The data provided herein are based on laboratory work with small-scale test equipment, running at standard conditions, and do not necessarily match product performance in industrial use. New knowledge and experiences can lead to modifications and changes within a short time without prior notice.

BECAUSE CONDITIONS OF USE ARE OUTSIDE OF HABASIT'S AND ITS AFFILIATED COMPANIES CONTROL, WE CANNOT ASSUME ANY LIABILITY CONCERNING THE SUITABILITY AND PROCESS ABILITY OF THE PRODUCTS MENTIONED HEREIN. THIS ALSO APPLIES TO PROCESS RESULTS / OUTPUT / MANUFACTURING GOODS AS WELL AS TO POSSIBLE DEFECTS, DAMAGES, CONSEQUENTIAL DAMAGES, AND FURTHER-REACHING CONSEQUENCES.