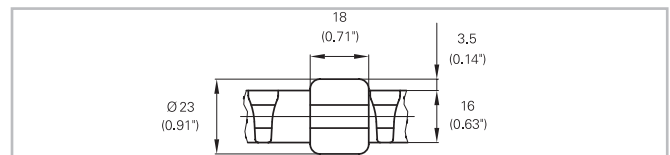
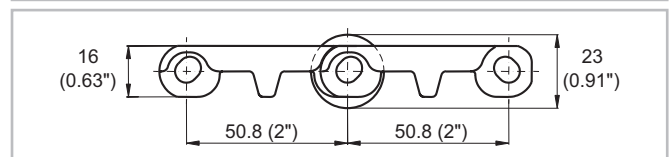
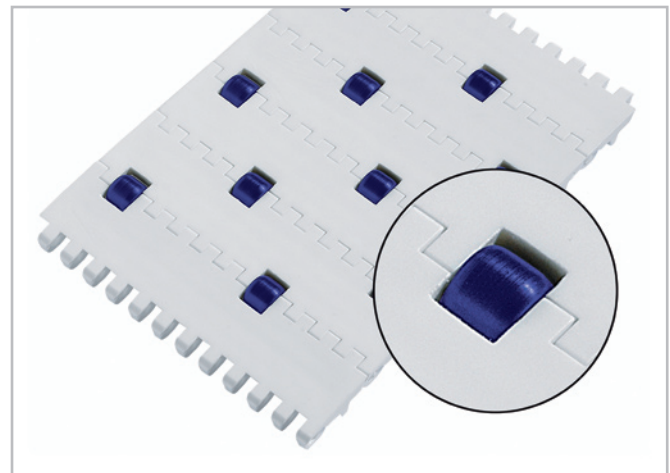


HabasitLINK® Straight 2" Pitch Belting M5010 Roller Top 2"



Description

- Largest opening 19x2 mm (0.7"x0.08")
- Roller lateral spacing see table belt data
- Rollers row spacing 50.8 mm (2")
- For low back pressure, wearstrips are placed between rollers
- For product driven application wearstrips are placed directly under the rollers
- Open hinge
- Food approved materials available
- Rod diameter 7 mm (0.27")



Belt data

Belt material		POM			
Rod material		PA			
Roller material		POM			
Roller lateral spacing per row	mm / inch	56 / 2.2	75 / 3	112 / 4.4	150 / 6
Roller offset next row	mm / inch	0 / 0	0 / 0	56 / 2.2	75 / 3
Roller dimension diameter / width	mm / inch	Ø 23 / 18 Ø 0.91 / 0.71	Ø 23 / 18 Ø 0.91 / 0.71	Ø 23 / 18 Ø 0.91 / 0.71	Ø 23 / 18 Ø 0.91 / 0.71
Nominal tensile strength F _N straight run	N/m / lb/ft	20000 / 1370	21000 / 1438	22000 / 1507	22500 / 1541
Temperature range	°C / °F	-40 - 93 / -40 - 200	-40 - 93 / -40 - 200	-40 - 93 / -40 - 200	-40 - 93 / -40 - 200
Belt weight m _B	kg/m ² / lb/sqft	13.5 / 2.77	13.5 / 2.77	13.5 / 2.77	13.5 / 2.77

Diameter of idling rollers (minimum)		Diameter of support rollers (minimum)		Diameter for gravity take-up and center drive rollers (minimum)		Backbending radius for elevators without sideguards or hold down devices (minimum)		Backbending radius for elevators with sideguards or hold down devices (minimum)	
mm	inch	mm	inch	mm	inch	mm	inch	mm	inch
90	3.5	100	4	150	6	150	6	250	10

Use the largest possible backbending radius for elevators with side guards or hold down devices.

HabasisLINK® Straight 2" Pitch Belting M5010 Roller Top 2"



Standard range of belt widths b_0 and free edge

Belt width (mm) (nom.)	225	300	375	450	525	600	675	750	825	900	975	1050	etc.
Belt width (inch) (nom.)	9	12	15	18	21	24	27	30	33	36	39	42	etc.
Roller lateral spacing per row 112.5 mm / offset next row 56.25 mm													
Free edge (mm)	19/19	19/37	19/55	19/19	19/37	19/55	19/19	19/37	19/55	19/19	19/37	19/55	etc.
Free edge (inch)	0.7/0.7	0.7/1.5	0.7/2.2	0.7/0.7	0.7/1.5	0.7/2.2	0.7/0.7	0.7/1.5	0.7/2.2	0.7/0.7	0.7/1.5	0.7/2.2	etc.
Sprocket offset (mm)	0	18.75	-18.75	0	18.75	-18.75	0	18.75	-18.75	0	18.75	-18.75	etc.
Sprocket offset (inch)	0	0.74	-0.74	0	0.74	-0.74	0	0.74	-0.74	0	0.74	-0.74	etc.
Sprockets	3	4	6	7	8	10	11	12	14	15	16	18	etc.
Rollers (2 rows)	4	5	6	8	9	10	12	13	14	16	17	18	etc.
Roller lateral spacing per row 150 mm / offset next row 75 mm													
Free edge (mm)	28	28	28	28	28	28	28	28	28	28	28	28	etc.
Free edge (inch)	1.1	1.1	1.1	1.1	1.1	1.1	1.1	1.1	1.1	1.1	1.1	1.1	etc.
Sprocket offset (mm)	37.5	0	37.5	0	37.5	0	37.5	0	37.5	0	37.5	0	etc.
Sprocket offset (inch)	1.5	0	1.5	0	1.5	0	1.5	0	1.5	0	1.5	0	etc.
Sprockets	2	3	4	5	6	7	8	9	10	11	12	13	etc.
Rollers (2 rows)	3	4	5	6	7	8	9	10	11	12	13	14	etc.

Real belt widths are in most cases 0.1% to 0.3% smaller.

Standard belt widths in increments of 75 mm (3"). Smallest possible width 225 mm (9").

For detailed material properties refer to the HabasisLINK® Engineering Guidelines or contact your Habasis representative.

The nominal tensile strength is valid for 23 °C (73 °F). The admissible tensile force depends on the operating temperature near the drive sprockets. Within the temperature range allowed, the admissible tensile force may vary from 100% to 20% of the nominal tensile strength. For detailed information and correct calculation of effective tensile force refer to the Calculation Guide in the HabasisLINK® Engineering Guidelines.

Product liability, application considerations

If the proper selection and application of Habasis products are not recommended by an authorized Habasis sales specialist, the selection and application of Habasis products, including the related area of product safety, are the responsibility of the customer.

All indications / information are recommendations and believed to be reliable, but no representations, guarantees, or warranties of any kind are made as to their accuracy or suitability for particular applications. The data provided herein are based on laboratory work with small-scale test equipment, running at standard conditions, and do not necessarily match product performance in industrial use. New knowledge and experiences can lead to modifications and changes within a short time without prior notice.

BECAUSE CONDITIONS OF USE ARE OUTSIDE OF HABASIS'S AND ITS AFFILIATED COMPANIES CONTROL, WE CANNOT ASSUME ANY LIABILITY CONCERNING THE SUITABILITY AND PROCESS ABILITY OF THE PRODUCTS MENTIONED HEREIN. THIS ALSO APPLIES TO PROCESS RESULTS / OUTPUT / MANUFACTURING GOODS AS WELL AS TO POSSIBLE DEFECTS, DAMAGES, CONSEQUENTIAL DAMAGES, AND FURTHER-REACHING CONSEQUENCES.