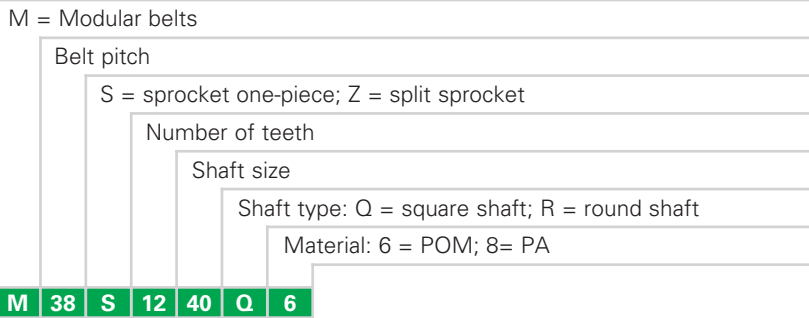


HabasitLINK® Sprockets - 1-1/2" Pitch Belting Sprocket Series M3800

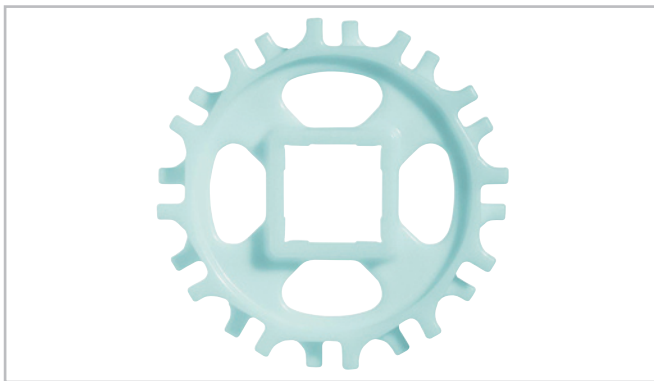


Sprocket availability

Type	Number of teeth	Diam. of pitch $\varnothing d_p$		A_1		Hub width B_L		Square bore Q		Standard material
		mm	inch	mm	inch	mm	inch	mm	inch	
S	8	101.9	4.0	42.0	1.65	30	1.18	40	1.5	POM
S	12	150.0	5.9	66.0	2.60	30	1.18	40 / 60	1.5 / 2.5	POM
S	16	198.2	7.8	90.1	3.55	30	1.18	40 / 60	1.5 / 2.5	POM

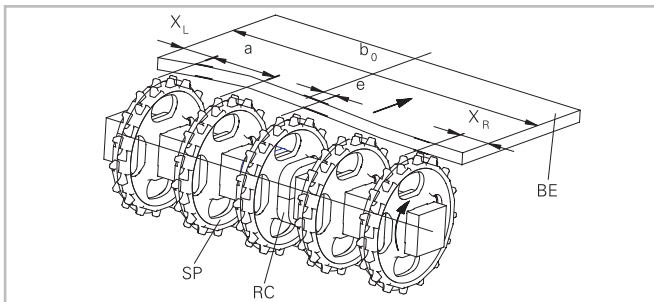
S: molded sprockets. Other sprocket and hub sizes on request.

Other materials available on request.

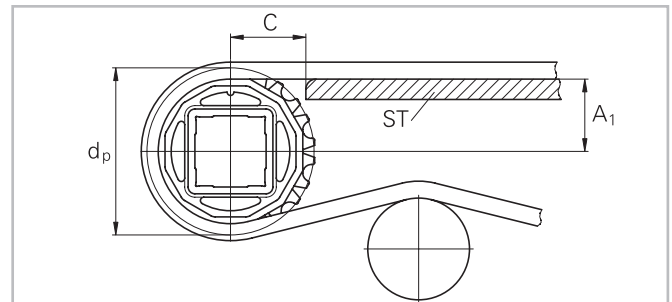


Sprocket one-piece ("open window")

Sprocket arrangement



BE Belt
RC Retainer
SP Sprocket
b₀ belt width



The distance **C** between the sprocket axis and the slider support **ST** is minimal 41 mm (1.6").

Wearstrips

Between driving shaft and idling sprockets or rollers the belt is carried by a slider support furnished with longitudinal wear strips from UHMW Polyethylene or other suitable material.

HabasitLINK® Sprockets - 1-1/2" Pitch Belting Sprocket Series M3800

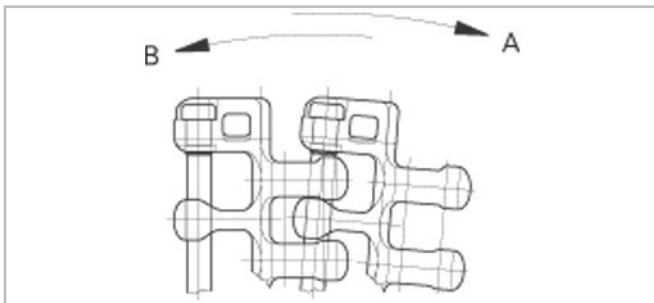


Sprocket positioning

For correct positioning of the center sprocket divide the belt width by the link increment. The rounded result will be an even or an odd number. These numbers are the criteria for offset or no offset, see table.

Belt type	Sprocket spacing a		Sprocket edge distance (minimal) *		Criteria for center sprocket position	Result of formula (rounded)	Offset e	Remarks
	minimal	maximal	X_L	X_R				
	mm inch	mm inch	mm inch	mm inch				
M3840 M3843	50 2	125 5	44 1.73	31 1.22	$b_o / 25$ $b_o / 0.98$	even number (2, 4, 6 ...)	6.3 0.25	left in running direction A right in running direction B
						odd number (3, 5, 7 ...)	6.3 0.25	right in running direction A left in running direction B
M3840 M3843 with hold down tabs	50 2	125 5	68 2.68	55 2.17	$b_o / 25$ $b_o / 0.98$	even number (2, 4, 6 ...)	6.3 2.25	left in running direction A right in running direction B
						odd number (3, 5, 7 ...)	6.3 0.25	right in running direction A left in running direction B
M3892	50.8 2	127 5	42.5 1.67	57 2.24	$b_o / 25.4$ $b_o / 1$	even number (2, 4, 6 ...)	6.2 0.24	left in running direction A right in running direction B
						odd number (3, 5, 7 ...)	6.2 0.24	right in running direction A left in running direction B

* X_L and X_R are related to the running direction A and inverse for running direction B.



Left edge X_L

HabasitLINK® Sprockets - 1-1/2" Pitch Belting

Sprocket Series M3800



Numbers of sprockets and wearstrips for M3840, M3843 and M3892 without hold down tabs

Standard belt width (nominal)		Number of sprockets per shaft min. number	Number of wearstrips	
mm	inch		Carryway (top)	Returnway (bottom)
200	8	2	2	2
250	10	2	2	2
300	12	2	2	2
350	14	3	2	2
400	16	3	3	3
450	18	3	3	3
500	20	3	3	3
550	22	3	3	3
600	24	5	4	3
650	26	5	4	3
700	28	5	4	3
750	30	5	4	3
800	32	5	5	4
850	34	7	5	4
900	36	7	5	4
950	38	7	5	4
1'000	40	7	6	5
1'050	42	7	6	5
1'100	44	9	6	5
1'150	46	9	6	5
1'200	48	9	7	6
1'250	50	9	7	6

The number of sprockets depends on the belt load and may be different for driving and idling shafts. For calculation of correct sprocket number please use LINK-SeleCalc.

HabasitLINK® Sprockets - 1-1/2" Pitch Belting

Sprocket Series M3800



Numbers of sprockets and wearstrips for M3840, M3843 with hold down tabs

Standard belt width (nominal)		Number of sprockets per shaft	Number of wearstrips	
mm	inch	min. number	Carryway (top)	Returnway (bottom)
200	8	2	2	2
250	10	2	2	2
300	12	2	2	2
350	14	3	2	2
400	16	3	3	3
450	18	3	3	3
500	20	3	3	3
550	22	3	3	3
600	24	5	4	3
650	26	5	4	3
700	28	5	4	3
750	30	5	4	3
800	32	5	5	4
850	34	7	5	4
900	36	7	5	4
950	38	7	5	4
1'000	40	7	6	5
1'050	42	7	6	5
1'100	44	9	6	5
1'150	46	9	6	5
1'200	48	9	7	6
1'250	50	9	7	6

The number of sprockets depends on the belt load and may be different for driving and idling shafts. For calculation of correct sprocket number please use LINK-SeleCalc.

Product liability, application considerations

If the proper selection and application of Habasit products are not recommended by an authorized Habasit sales specialist, the selection and application of Habasit products, including the related area of product safety, are the responsibility of the customer. All indications / information are recommendations and believed to be reliable, but no representations, guarantees, or warranties of any kind are made as to their accuracy or suitability for particular applications. The data provided herein are based on laboratory work with small-scale test equipment, running at standard conditions, and do not necessarily match product performance in industrial use. New knowledge and experiences can lead to modifications and changes within a short time without prior notice. BECAUSE CONDITIONS OF USE ARE OUTSIDE OF HABASIT'S AND ITS AFFILIATED COMPANIES CONTROL, WE CANNOT ASSUME ANY LIABILITY CONCERNING THE SUITABILITY AND PROCESS ABILITY OF THE PRODUCTS MENTIONED HEREIN. THIS ALSO APPLIES TO PROCESS RESULTS / OUTPUT / MANUFACTURING GOODS AS WELL AS TO POSSIBLE DEFECTS, DAMAGES, CONSEQUENTIAL DAMAGES, AND FURTHER-REACHING CONSEQUENCES.