

HabasitLINK® Sprockets - 1" Pitch Belting

Sprocket Series M2400



M = Modular belts

Belt pitch

S = sprocket one-piece; Z = split sprocket

Number of teeth

Shaft size

Shaft type: Q = square shaft; R = round shaft

Material: 6 = POM; 8 = PA

M 24 S 12 40 Q 8

Sprocket availability

Type	Number of teeth	Diam. of pitch $\varnothing d_p$		A_1		Hub width B_L		Square bore Q		Ø Round bore R		Standard material
		mm	inch	mm	inch	mm	inch	mm	inch	mm	inch	
S	12	99.5	3.9	45.1	1.78	25	0.98	40	1.5	30	1	PA
S	18	148.3	5.8	69.4	2.73	25	0.98	40 / 60	1.5 / 2.5	-	-	PA
S-C1	12	99.5	3.9	45.1	1.78	25	0.98	-	-	40	1.5	PA
S-C1	15	123.9	4.9	57.2	2.25	25	0.98	60	-	-	-	PA
S-C1	18	148.3	5.8	69.4	2.73	25	0.98	-	-	30 / 40 / 50	1 / 1.5	PA
S-C1	20	164.6	6.5	77.5	3.05	25	0.98	-	-	40 / 50	1.5	PA
Z-H	18	148.3	5.8	69.4	2.73	51	2.00	40 / 60	1.5 / 2.5	30 / 40 / 50	1 / 1 ³ / ₁₆ / 1 ¹ / ₄ / 1 ⁷ / ₁₆	PA+GS
Z-H	21	172.8	6.8	82.0	3.23	51	2.00	40 / 60	1.5 / 2.5	30 / 40 / 50	1 / 1 ³ / ₁₆ / 1 ¹ / ₄ / 1 ⁷ / ₁₆	PA+GS

S: molded sprockets; S-C1: machined sprockets; Z-H: Multi-Hub sprockets. Other sprocket and hub sizes on request.

Key ways for round bore shape follow European standards for metric sizes and US standards for imperial sizes. For detailed dimensions see table in the Design Guide.

Other materials available on request.



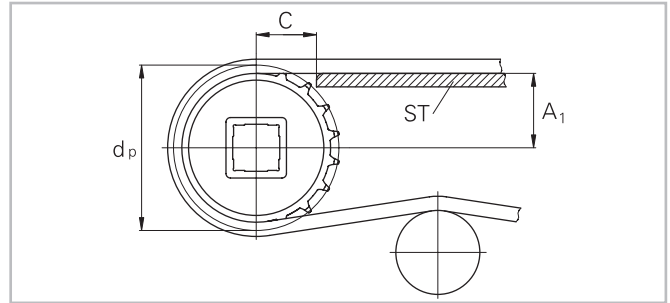
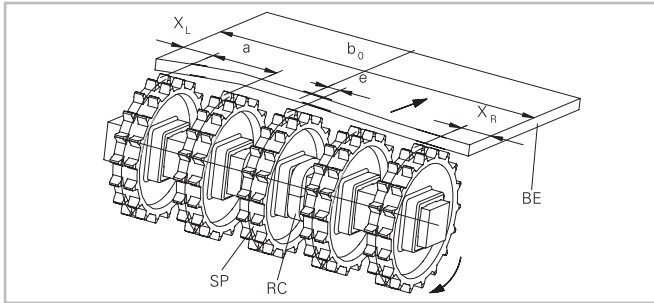
Sprocket one-piece (solid)

HabasitLINK® Sprockets - 1" Pitch Belting

Sprocket Series M2400



Sprocket arrangement



BE Belt
RC Retainer
SP Sprocket
b₀ belt width

The distance **C** between the sprocket axis and the slider support **ST** is minimal 28 mm (1.1").

Wearstrips

Between driving shaft and idling sprockets or rollers the belt is carried by a slider support furnished with longitudinal wear strips (SL) from UHMW Polyethylene or other suitable material.

Sprocket positioning

For correct positioning of the center sprocket divide the belt width by the link increment. The rounded result will be an even or an odd number. These numbers are the criteria for offset or no offset, see table.

Belt type	Sprocket spacing a		Sprocket edge distance (minimal)		Criteria for center sprocket position	Result of formula (rounded)	Offset e	Remarks
	minimal	maximal	X _L	X _R				
	mm inch	mm inch	mm inch	mm inch				
M2420	51 2	170 6.7	42.5 1.67	42.5 1.67	b ₀ / 17 b ₀ / 0.67	even number (2, 4, 6 ...)	8.5 0.33	right or left side
						odd number (3, 5, 7 ...)	0 0	no offset
M2470 M2480	50.8 2	152.4 6	23 0.9	23 0.9	b ₀ / 15.24 b ₀ / 0.6	even number (2, 4, 6 ...)	7.6 0.29	right or left side
						odd number (3, 5, 7 ...)	0 0	no offset

HabasitLINK® Sprockets - 1" Pitch Belting

Sprocket Series M2400



Numbers of sprockets and wearstrips for M2420

Standard belt width (nominal)		Number of sprockets per shaft	Number of wearstrips	
mm	inch		min. number	
			Carryway (top)	Returnway (bottom)
85	3.3	1	2	2
170	6.7	2	2	2
255	10.0	2	3	2
340	13.4	2	3	2
425	16.7	3	4	3
510	20.1	3	4	3
595	23.4	4	5	3
680	26.8	4	5	3
765	30.1	5	6	4
850	33.5	5	6	4
935	36.8	6	7	4
1'020	40.2	6	7	4
1'105	43.5	7	8	5
1'190	46.9	7	8	5
1'275	50.2	8	9	5
1'360	53.5	8	9	5
1'445	56.9	9	10	6
1'530	60.2	9	10	6
1'615	63.6	10	11	6
1'700	66.9	10	11	6
1'785	70.3	11	12	7
1'870	73.6	11	12	7
1'955	77.0	12	13	7
2'040	80.3	12	13	7

The number of sprockets depends on the belt load and may be different for driving and idling shafts. For calculation of correct sprocket number please use LINK-SeleCalc.

HabasitLINK® Sprockets - 1" Pitch Belting

Sprocket Series M2400



Numbers of sprockets and wearstrips for M2470, M2480

Standard belt width (nominal)		Number of sprockets per shaft		Number of wearstrips	
mm	inch	min. number		Carryway (top)	Returnway (bottom)
76	3.0	1		2	2
152	6.0	2		3	2
229	9.0	2		3	2
305	12.0	2		4	2
381	15.0	3		4	3
457	18.0	3		5	3
533	21.0	3		5	3
610	24.0	3		6	3
686	27.0	5		6	4
762	30.0	5		7	4
838	33.0	5		7	4
914	36.0	5		8	4
991	39.0	7		8	5
1'067	42.0	7		9	5
1'143	45.0	7		9	5
1'219	48.0	7		10	5
1'295	51.0	9		10	6
1'372	54.0	9		11	6
1'448	57.0	9		11	6
1'524	60.0	9		12	6
1'600	63.0	11		12	7
1'676	66.0	11		13	7
1'753	69.0	11		13	7
1'829	72.0	11		14	7
1'905	75.0	13		14	8
1'981	78.0	13		15	8
2'057	81.0	13		15	8

The number of sprockets depends on the belt load and may be different for driving and idling shafts. For calculation of correct sprocket number please use LINK-SeleCalc.

Numbers of sprockets and wearstrips for M2420 ActivXchange 1"

Standard belt width (nominal)		Number of sprockets per shaft		Number of wearstrips	
mm	inch	Drive shaft (loaded shaft)	Idling shaft (unloaded shaft)	Carryway (top)	Returnway (bottom)
109.8	4.3	1	1	2	2

Numbers of sprockets and wearstrips for M2470 ActivXchange 1"

Standard belt width (nominal)		Number of sprockets per shaft		Number of wearstrips	
mm	inch	Drive shaft (loaded shaft)	Idling shaft (unloaded shaft)	Carryway (top)	Returnway (bottom)
152.2	6.0	2	1	2	2

Numbers of sprockets and wearstrips for M2480 ActivXchange 1"

Standard belt width (nominal)		Number of sprockets per shaft		Number of wearstrips	
mm	inch	Drive shaft (loaded shaft)	Idling shaft (unloaded shaft)	Carryway (top)	Returnway (bottom)
152.2	6.0	2	1	2	2

HabasitLINK® Sprockets - 1" Pitch Belting

Sprocket Series M2400



Numbers of sprockets and wearstrips for M2470 Flat Top 1" MTW

Standard belt width (nominal)		Number of sprockets per shaft		Number of wearstrips	
mm	<i>inch</i>	Drive shaft (loaded shaft)	Idling shaft (unloaded shaft)	Carryway (top)	Returnway (bottom)
82.6	3.25	1	1	2	2
114.3	4.5	1	1	2	2
152.2	6.0	3	2	2	2
190.5	7.5	3	2	2	2

The number of sprockets depends on the belt load and may be different for driving and idling shafts. For calculation of correct sprocket number please use LINK-SeleCalc.

Product liability, application considerations

If the proper selection and application of Habasit products are not recommended by an authorized Habasit sales specialist, the selection and application of Habasit products, including the related area of product safety, are the responsibility of the customer.

All indications / information are recommendations and believed to be reliable, but no representations, guarantees, or warranties of any kind are made as to their accuracy or suitability for particular applications. The data provided herein are based on laboratory work with small-scale test equipment, running at standard conditions, and do not necessarily match product performance in industrial use. New knowledge and experiences can lead to modifications and changes within a short time without prior notice.

BECAUSE CONDITIONS OF USE ARE OUTSIDE OF HABASIT'S AND ITS AFFILIATED COMPANIES CONTROL, WE CANNOT ASSUME ANY LIABILITY CONCERNING THE SUITABILITY AND PROCESS ABILITY OF THE PRODUCTS MENTIONED HEREIN. THIS ALSO APPLIES TO PROCESS RESULTS / OUTPUT / MANUFACTURING GOODS AS WELL AS TO POSSIBLE DEFECTS, DAMAGES, CONSEQUENTIAL DAMAGES, AND FURTHER-REACHING CONSEQUENCES.