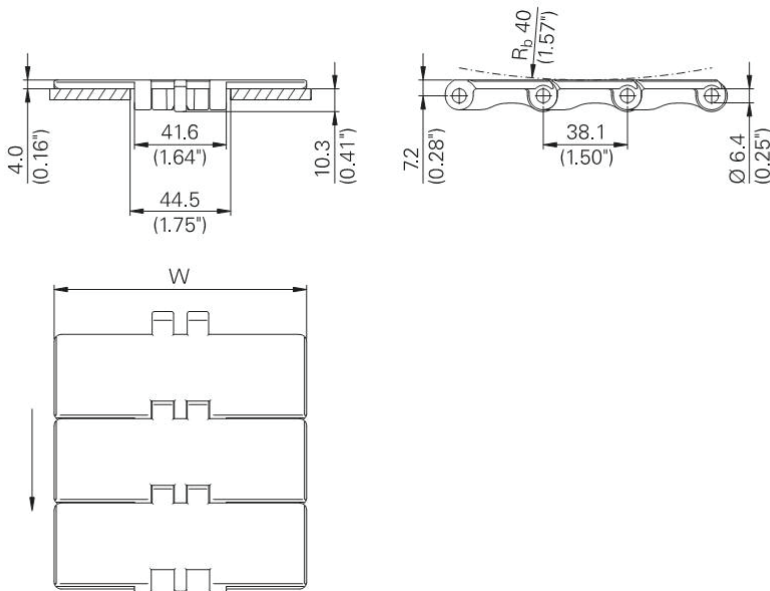
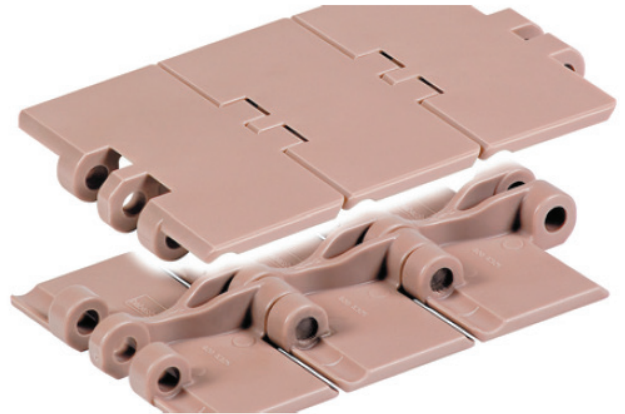


# Conveyor Chains

## Slat top 820 (straight)

### Description

Slat Top 820 is a standard duty straight running plastic chain. Top plate thickness 4mm. Applications include packaging and bottling lines. Use 820 series for side transfer with 770, 880 or 890 series radius chains.



Code	Width
820 LF 325	3-1/4
820 LF 400	4
820 LF 450	4-1/2
820 LF 600	6
820 LF 750	7-1/2

Standard material is Brown low friction acetal with stainless steel rods. Other material, colors or pin material available on request.

See page 48 for sprocket information



See page 49 for idler information



See page 53 to 55 for other accessories

