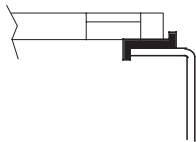
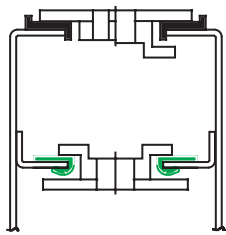
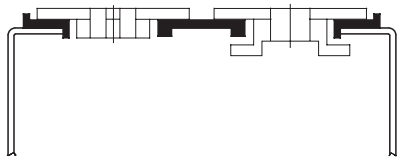


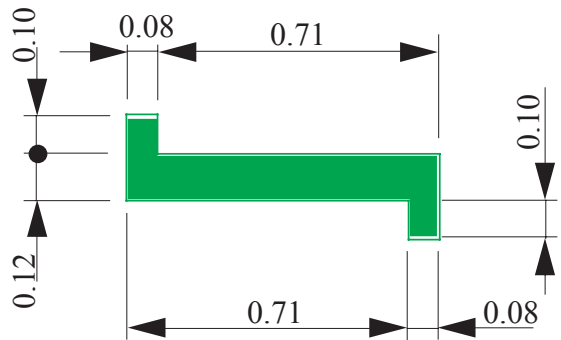
# Wearstrip for Conveyor Belts, Chains, and Product Supports

Chain Guides can be used in chain applications for carryway support and return of straight sections.



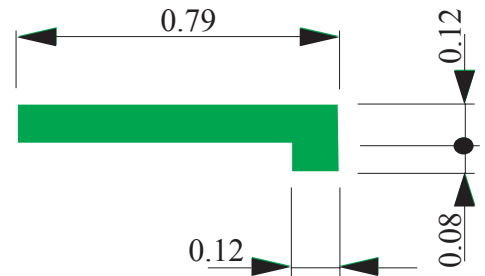
Chain guide profile  
Green uhmw  
standard length : 3 meters

**Part # 241-63641**

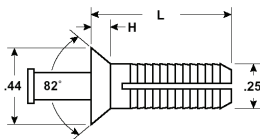


Chain guide profile  
Green uhmw  
standard length : 3 meters

**Part # 243-63701**



Plastic rivets can be used to assemble wearstrips. See page 15 for details



Chain guide profile  
Green uhmw  
standard length : 3 meters

**Part # 362-694331**

