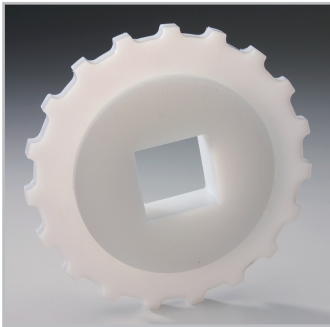
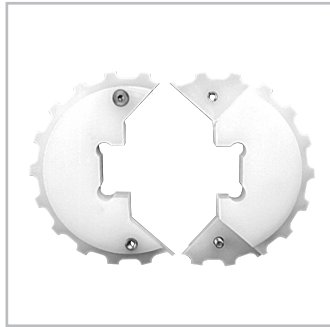


# KVP® Sprockets – 1" Pitch Belting

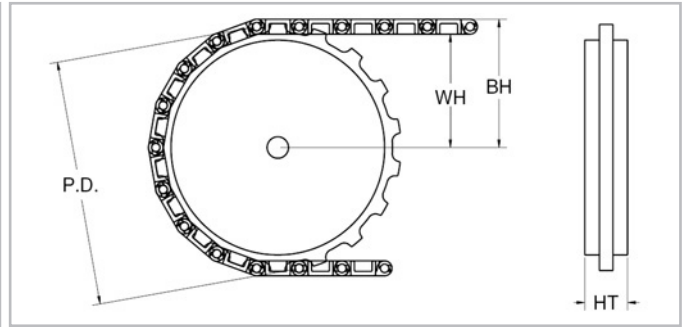
## 208 CL, 208 35, 208 RR



Machined sprocket



Split sprocket



Sprocket part number	Number of teeth	(PD) Nominal pitch diameter		(WH) Shaft center to top of wearstrip		(BH) Shaft center to top of belt		(HT) Hub thickness	
		inch	mm	inch	mm	inch	mm	inch	mm
SB208PEU6	6	2.0	51	0.83	21	1.18	30	1.0	25
SB208PEU9	9	2.92	74	1.29	33	1.64	42	1.0	25
SB208PEU10	10	3.24	82	1.45	37	1.80	46	1.0	25
SB208PEU12	12	3.86	98	1.76	45	2.20	56	1.0	25
SB208PEU18	18	5.76	146	2.71	69	3.06	78	1.0	25
STB208PEU18	18	5.76	146	2.71	69	3.06	78	1.0	25
SB208PEU19	19	6.08	154	2.87	73	3.22	82	1.0	25
STB208PEU19	19	6.08	154	2.87	73	3.22	82	1.0	25
SB208PEU20	20	6.39	162	3.03	77	3.38	86	1.0	25
STB208PEU20	20	6.39	162	3.03	77	3.38	86	1.0	25

SB = solid body, STB = split body

Split sprockets and other tooth sizes are available. Standard machined sprocket material is UHMW, Nylon and Urethane are available. Please contact your local partner.

Sprocket part number	Available bore size																	
	3/4"	25 mm	25 mm sq.	1"	1" sq.	30 mm	1-1/4"	1-7/16"	1-1/2"	1-1/2" sq.	40 mm	40 mm sq.	1-15/16"	50 mm	2" sq.	60 mm	60 mm sq.	2-1/2" sq.
SB208PEU6	✓	–	–	–	–	–	–	–	–	–	–	–	–	–	–	–	–	–
SB208PEU9	✓	✓	✓	✓	✓	✓	✓	✓	✓	–	–	–	–	–	–	–	–	–
SB208PEU10	✓	✓	✓	✓	✓	✓	✓	✓	✓	✓	✓	✓	✓	✓	–	–	–	–
SB208PEU12	✓	✓	✓	✓	✓	✓	✓	✓	✓	✓	✓	✓	✓	✓	–	–	–	–
SB208PEU18	✓	✓	✓	✓	✓	✓	✓	✓	✓	✓	✓	✓	✓	✓	✓	✓	✓	✓
STB208PEU18	✓	✓	✓	✓	✓	✓	✓	✓	✓	✓	✓	✓	–	–	–	–	–	–
SB208PEU19	✓	✓	✓	✓	✓	✓	✓	✓	✓	✓	✓	✓	✓	✓	✓	✓	✓	✓
STB208PEU19	✓	✓	✓	✓	✓	✓	✓	✓	✓	✓	✓	✓	–	–	–	–	–	–
SB208PEU20	✓	✓	✓	✓	✓	✓	✓	✓	✓	✓	✓	✓	✓	✓	✓	✓	✓	✓
STB208PEU20	✓	✓	✓	✓	✓	✓	✓	✓	✓	✓	✓	✓	–	–	–	–	–	–

SB = solid body, STB = split body

All bore sizes are round bore unless designated square (sq.)

**Product liability, application considerations**

If the proper selection and application of Habasit products are NOT recommended by an authorized Habasit sales specialist, the selection and application of Habasit products, including the related area of product safety, are the responsibility of the customer.

All indications / information are recommendations and believed to be reliable, but no representations, guarantees, or warranties of any kind are made as to their accuracy or suitability for particular applications. The data provided herein are based on laboratory work with small-scale test equipment, running at standard conditions, and do not necessarily match product performance in industrial use. New knowledge and experiences can lead to modifications and changes within a short time without prior notice.

BECAUSE CONDITIONS OF USE ARE OUTSIDE OF HABASIT'S AND ITS AFFILIATED COMPANIES CONTROL, WE CANNOT ASSUME ANY LIABILITY CONCERNING THE SUITABILITY AND PROCESS ABILITY OF THE PRODUCTS MENTIONED HEREIN. THIS ALSO APPLIES TO PROCESS RESULTS / OUTPUT / MANUFACTURING GOODS AS WELL AS TO POSSIBLE DEFECTS, DAMAGES, CONSEQUENTIAL DAMAGES, AND FURTHER-REACHING CONSEQUENCES.

**▲ WARNING**

Habasit belts and chains are made of various plastics that WILL BURN if exposed to sparks, incendiaries, open flame or excessive heat.

NEVER expose plastic belts and chains to a potential source of ignition. Flames resulting from burning plastics may emit TOXIC SMOKE and gasses as well as cause SERIOUS INJURIES and PROPERTY DAMAGE. See the Fire Hazard Data Sheet for additional information.