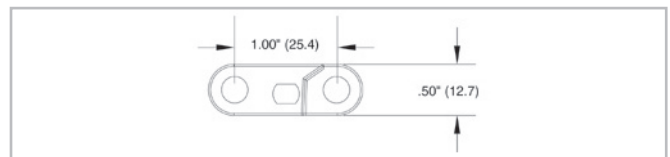
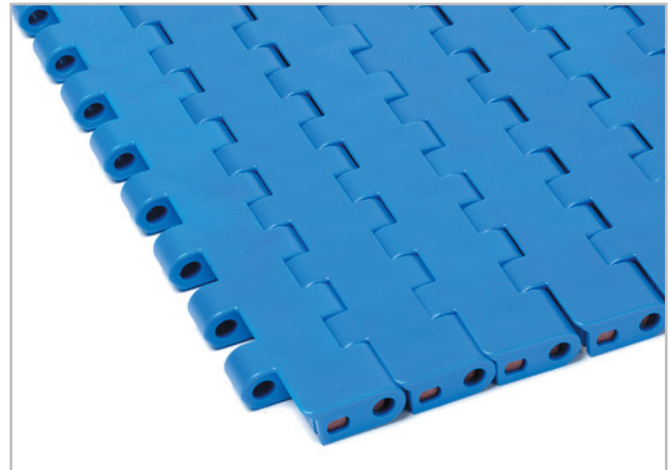


# KVP® Straight 1" Pitch Belting MB610 (Monster Belt)



## Description

- 1 inch pitch
- Solid top surface
- Bi-directional
- Connecting rod diameter = 0.250 inch (6.4 mm)
- Standard belt width increments = 1 inch (25.4 mm) nominal starting from 6 inches (152.4 mm)
- Material selection may affect belt width — please contact your local partner for actual dimensions



## Belt data

Belt material		POM
Rod material		PA
Nominal tensile strength $F'_N$ straight run	N/m lb/ft	36485 2500
Temperature range	°C °F	-40 - 93 -40 - 200
Belt weight $m_B$	kg/m <sup>2</sup> lb/sqft	13.4 2.75
Standard belt color		blue

## Temperature range

Module material	Rod material	Temperature range	
POM	PA	-40 °C to +93 °C	-40 °F to +200 °F

## Product liability, application considerations

If the proper selection and application of Habasit products are not recommended by an authorized Habasit sales specialist, the selection and application of Habasit products, including the related area of product safety, are the responsibility of the customer. All indications / information are recommendations and believed to be reliable, but no representations, guarantees, or warranties of any kind are made as to their accuracy or suitability for particular applications. The data provided herein are based on laboratory work with small-scale test equipment, running at standard conditions, and do not necessarily match product performance in industrial use. New knowledge and experiences can lead to modifications and changes within a short time without prior notice. BECAUSE CONDITIONS OF USE ARE OUTSIDE OF HABASIT'S AND ITS AFFILIATED COMPANIES CONTROL, WE CANNOT ASSUME ANY LIABILITY CONCERNING THE SUITABILITY AND PROCESS ABILITY OF THE PRODUCTS MENTIONED HEREIN. THIS ALSO APPLIES TO PROCESS RESULTS / OUTPUT / MANUFACTURING GOODS AS WELL AS TO POSSIBLE DEFECTS, DAMAGES, CONSEQUENTIAL DAMAGES, AND FURTHER-REACHING CONSEQUENCES.