

HabasitLINK® Sprockets - 2" Pitch Belting

Sprocket Series M5000



M = Modular belts						
Belt pitch						
S = sprocket one-piece; Z = split sprocket						
Number of teeth						
Shaft size						
Shaft type: Q = square shaft; R = round shaft						
Material: 6 = POM; 8 = PA						
M	50	S	10	40	Q	6

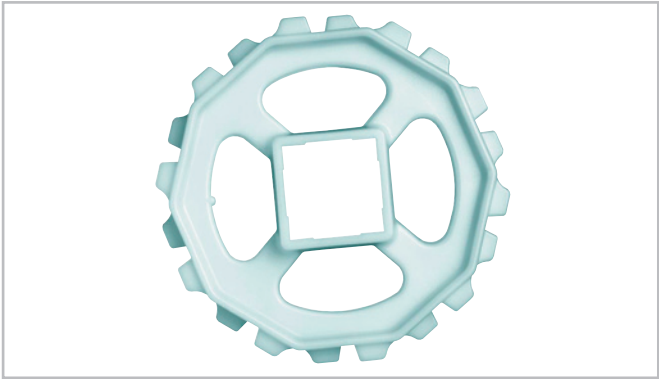
Sprocket availability

Type	Number of teeth	Diam. of pitch $\varnothing d_p$ A ₁				Hub width B _L		Square bore Q		Ø Round bore R		Standard material
		mm	inch	mm	inch	mm	inch	mm	inch	mm	inch	
S	6	102.1	4.0	43.0	1.70	40	1.57	40	1.5	-	-	POM
S	8	133.4	5.3	58.7	2.31	40	1.57	40 / 60	1.5	-	-	POM
S	10	165.2	6.5	74.6	2.94	40	1.57	40 / 60	1.5 / 2.5	-	-	POM
S	12	197.2	7.8	90.6	3.57	40	1.57	40 / 60	1.5 / 2.5 / 3.5	-	-	POM
S	16	261.5	10.3	122.7	4.83	40	1.57	40 / 60 / 90	1.5 / 2.5 / 3.5	-	-	POM
Z-B	12	197.2	7.8	90.6	3.57	40	1.57	40 / 60 / 90	1.5 / 2.5 / 3.5	40 / 50 / 60	1.5 / 2 / 2.5	PA
Z-B	16	261.5	10.3	122.7	4.83	40	1.57	40 / 60 / 90 / 120	1.5 / 2.5 / 3.5 / 4.75	40 / 50 / 60	1.5 / 2 / 2.5	PA

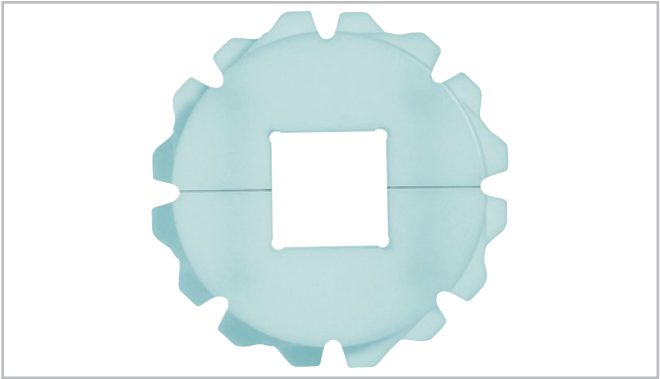
S: molded sprockets; Z-B: molded sprockets with machined bore (hollow hub). Other sprocket and hub sizes on request.

Key ways for round bore shape follow European standards for metric sizes and US standards for imperial sizes. For detailed dimensions see table in the Design Guide.

Other materials available on request.



Sprocket one-piece



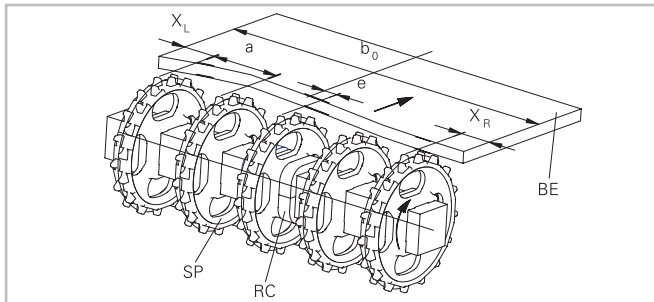
Split sprocket

HabasitLINK® Sprockets - 2" Pitch Belting

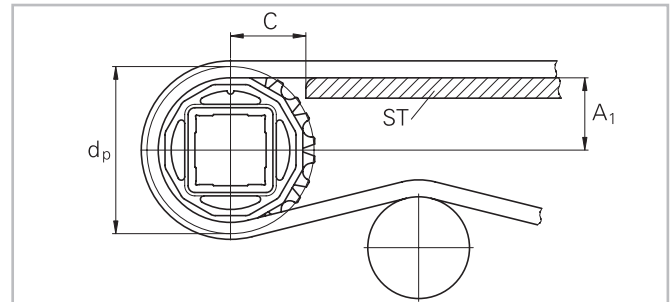
Sprocket Series M5000



Sprocket arrangement



BE Belt
RC Retainer
SP Sprocket
b₀ belt width



The distance **C** between the sprocket axis and the slider support **ST** is minimal 53 mm (2.1").

Wearstrips

Between driving shaft and idling sprockets or rollers the belt is carried by a slider support furnished with longitudinal wear strips from UHMW Polyethylene or other suitable material.

Sprocket positioning

For correct positioning of the center sprocket divide the belt width by the link increment. The rounded result will be an even or an odd number. These numbers are the criteria for offset or no offset, see table.

Belt type	Sprocket spacing a		Sprocket edge distance (minimal)		Criteria for center sprocket position	Result of formula (rounded)	Offset e	Remarks
	minimal	maximal	X _L mm inch	X _R mm inch				
	mm inch	mm inch			mm inch	mm inch	mm inch	mm inch
M5010	56.25	150	37.5	37.5	b ₀ / 18.75	even number	0	no offset
M5011	2.2	6	1.48	1.48	b ₀ / 0.74	(2, 4, 6 ...)	0	
M5013						odd number	9.4	right or left side
M5014						(3, 5, 7 ...)	0.37	
M5015	56.25	150	37.5	37.5	b ₀ / 18.75	even number	0	no offset
M502x	2.2	6	1.48	1.48	b ₀ / 0.74	(2, 4, 6 ...)	0	
M503x						odd number	9.4	right or left side
						(3, 5, 7 ...)	0.37	
M5060	50.8	152.4	25.4	25.4	b ₀ / 25.4	even number	0	no offset
M5067	2	6	1	1	b ₀ / 1	(2, 4, 6 ...)	0	
						odd number	12.7	right or left side
						(3, 5, 7 ...)	0.5	
M5064	50.8	152.4	50.8	50.8	b ₀ / 25.4	even number	0	no offset
	2	6	2	2	b ₀ / 1	(2, 4, 6 ...)	0	
						odd number	12.7	right or left side
						(3, 5, 7 ...)	0.5	

HabasitLINK® Sprockets - 2" Pitch Belting

Sprocket Series M5000



Numbers of sprockets and wearstrips for M501x, M502x, M503x

Standard belt width (nominal)		Number of sprockets per shaft	Number of wearstrips	
mm	inch	min. number	Carryway (top)	Returnway (bottom)
150	6	2	2	2
225	9	2	2	2
300	12	2	3	2
375	15	3	3	3
450	18	3	3	3
525	21	3	4	3
600	24	3	4	3
675	27	5	5	3
750	30	5	5	4
825	33	5	6	4
900	36	5	6	4
975	39	7	7	5
1'050	42	7	7	5
1'125	45	7	7	5
1'200	48	7	8	5
1'500	59	9	8	6
1'800	70	11	9	6
2'100	83	13	10	7
2'400	95	15	11	8
2'700	106	17	12	9
3'000	118	19	13	10

The number of sprockets depends on the belt load and may be different for driving and idling shafts.
For calculation of correct sprocket number please use LINK-SeleCalc.

HabasitLINK® Sprockets - 2" Pitch Belting

Sprocket Series M5000



Numbers of sprockets and wearstrips for M5060, M5064

Standard belt width (nominal)		Number of sprockets per shaft	Number of wearstrips	
mm	inch	min. number	Carryway (top)	Returnway (bottom)
102	4	2	2	2
203	8	2	2	2
305	12	2	3	2
406	16	3	3	3
508	20	3	3	3
610	24	3	4	3
711	28	5	4	3
813	32	5	5	3
914	36	5	5	4
1'016	40	7	6	4
1'118	44	7	6	4
1'219	48	7	7	5
1'422	56	9	7	5
1'626	64	11	7	5
1'829	72	11	8	5
2'032	80	13	8	6
2'235	88	15	9	6
2'438	96	15	10	7
2'642	104	17	11	8
2'845	112	19	12	9
3'048	120	19	13	10

The number of sprockets depends on the belt load and may be different for driving and idling shafts.
For calculation of correct sprocket number please use LINK-SeleCalc.

Product liability, application considerations

If the proper selection and application of Habasit products are not recommended by an authorized Habasit sales specialist, the selection and application of Habasit products, including the related area of product safety, are the responsibility of the customer.

All indications / information are recommendations and believed to be reliable, but no representations, guarantees, or warranties of any kind are made as to their accuracy or suitability for particular applications. The data provided herein are based on laboratory work with small-scale test equipment, running at standard conditions, and do not necessarily match product performance in industrial use. New knowledge and experiences can lead to modifications and changes within a short time without prior notice.

BECAUSE CONDITIONS OF USE ARE OUTSIDE OF HABASIT'S AND ITS AFFILIATED COMPANIES CONTROL, WE CANNOT ASSUME ANY LIABILITY CONCERNING THE SUITABILITY AND PROCESS ABILITY OF THE PRODUCTS MENTIONED HEREIN. THIS ALSO APPLIES TO PROCESS RESULTS / OUTPUT / MANUFACTURING GOODS AS WELL AS TO POSSIBLE DEFECTS, DAMAGES, CONSEQUENTIAL DAMAGES, AND FURTHER-REACHING CONSEQUENCES.