

# HabasitLINK® Straight 1" Pitch Belting M2531 Raised Rib 1"

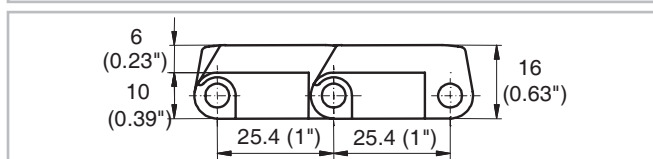
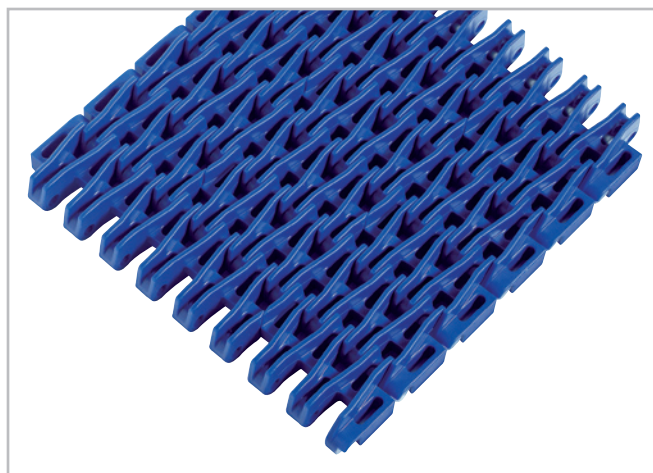


## Description

- 35% open area; 75% open contact area; largest opening 5.5x7 mm (0.22"x0.28")
- Excellent for cooling and draining
- Food approved materials available
- Rod diameter 5 mm (0.2")

## Available accessories

- Combs (finger transfer plates)



## Belt data

Belt material		PP		POM	
Rod material		PP		PA	
Nominal tensile strength $F'_N$ straight run	N/m lb/ft	16000 1096		19000 1300	27000 1850
Temperature range	°C °F	5 - 105 40 - 220		5 - 93 40 - 200	-40 - 93 -40 - 200
Belt weight $m_B$	kg/m² lb/sqft	6.8 1.40		10.4 2.13	10.4 2.13

Diameter of idling rollers (minimum)		Diameter of support rollers (minimum)		Diameter for gravity take-up and center drive rollers (minimum)		Backbending radius for elevators without sideguards or hold down devices (minimum)	
mm	inch	mm	inch	mm	inch	mm	inch
40	1.6	50	2	100	4	150	6

## Standard range of belt widths $b_0$

mm (nom.)	150	200	250	300	350	400	450	500	550	600	650	700	750	800	etc.
inch (nom.)	6	8	10	12	14	16	18	20	22	24	26	28	30	32	etc.

Real belt widths are in most cases 0.1% to 0.3% wider.

**Standard belt widths** in increments of 50 mm (2"). Non-standard widths are offered in increments of 16.66 mm (0.66"). Smallest possible width 83.4 mm (3.25").

**For detailed material properties** refer to the HabasitLINK® Engineering Guidelines or contact your Habasit representative.

**The nominal tensile strength** is valid for 23 °C (73 °F). The admissible tensile force depends on the operating temperature near the drive sprockets. Within the temperature range allowed, the admissible tensile force may vary from 100% to 20% of the nominal tensile strength. For detailed information and correct calculation of effective tensile force refer to the Calculation Guide in the HabasitLINK® Engineering Guidelines.

# HabasitLINK® Straight 1" Pitch Belting M2531 Raised Rib 1"



## **Product liability, application considerations**

If the proper selection and application of Habasit products are not recommended by an authorized Habasit sales specialist, the selection and application of Habasit products, including the related area of product safety, are the responsibility of the customer.

All indications / information are recommendations and believed to be reliable, but no representations, guarantees, or warranties of any kind are made as to their accuracy or suitability for particular applications. The data provided herein are based on laboratory work with small-scale test equipment, running at standard conditions, and do not necessarily match product performance in industrial use. New knowledge and experiences can lead to modifications and changes within a short time without prior notice.

BECAUSE CONDITIONS OF USE ARE OUTSIDE OF HABASIT'S AND ITS AFFILIATED COMPANIES CONTROL, WE CANNOT ASSUME ANY LIABILITY CONCERNING THE SUITABILITY AND PROCESS ABILITY OF THE PRODUCTS MENTIONED HEREIN. THIS ALSO APPLIES TO PROCESS RESULTS / OUTPUT / MANUFACTURING GOODS AS WELL AS TO POSSIBLE DEFECTS, DAMAGES, CONSEQUENTIAL DAMAGES, AND FURTHER-REACHING CONSEQUENCES.

# Product Data Series M2500

## Data of Combs for M2531

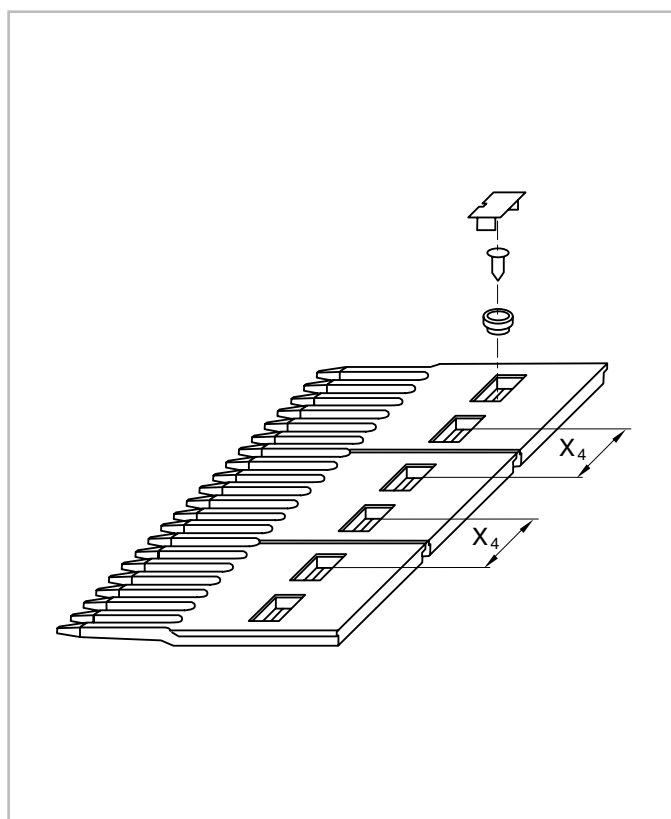
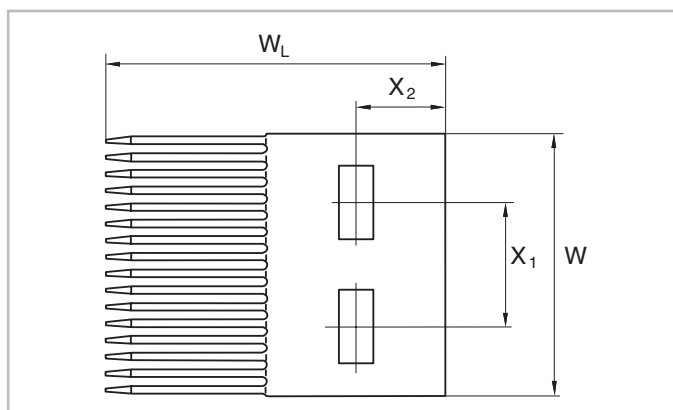
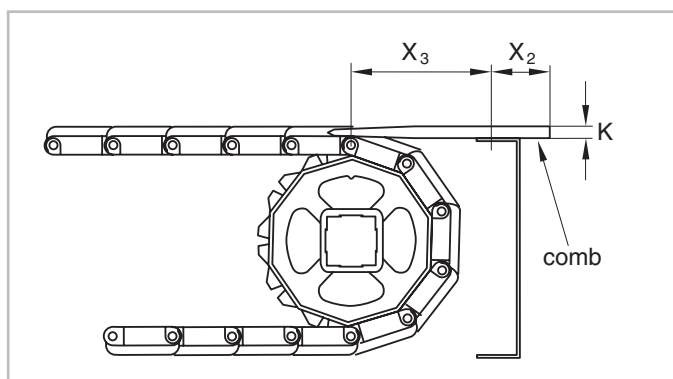
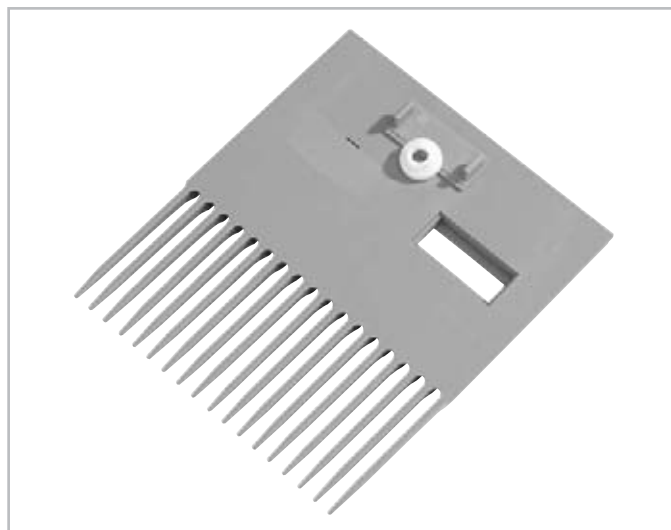


Material		Acetal (standard)	other materials on request
Temperature range	°C °F	-40 – 90 -40 – 195	
Color		grey	

### Installation data

Dimensions	mm	inch
W	148	5.8
W <sub>L</sub>	170	7.5
X <sub>1</sub>	70	2.75
X <sub>2</sub>	50	2
X <sub>3</sub>	80 – 90	3.2 – 3.5
X <sub>4</sub>	80	3.2
K	10	0.4

(Finger transfer plates)



### Note

The combs are fixed using a special bushing that allows lateral movement. This allows the combs to adapt their position to the lateral displacement of the belt, caused by thermal expansion. For belt widths up to 300 mm (12"), the plates can be firmly fixed (2 plates max.).