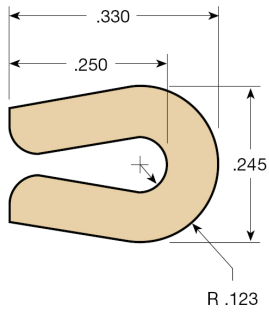
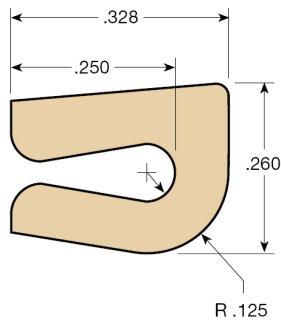


# Air Conveyor Neck Guide



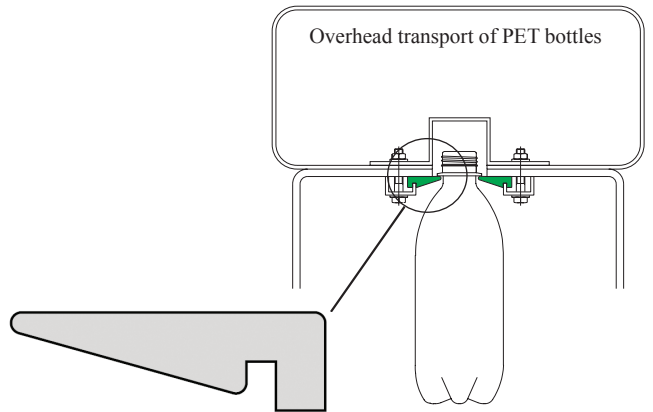
**CV-299PL**

Supplied in grey oil filled UHMW



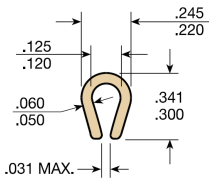
**CV-300**

Supplied in black glass filled UHMW

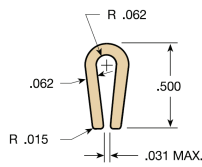


Many types, styles, and dimensions available.  
Contact us for details.

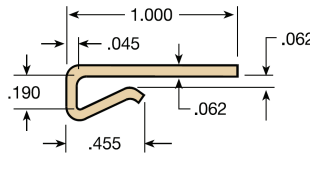
# Nylon MD Extrusions



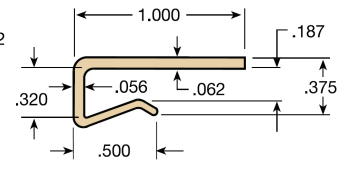
**CV-101**



**CV-106**



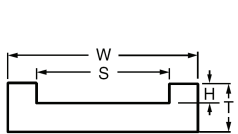
**CV-226**



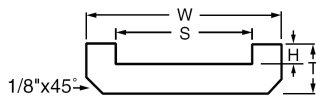
**CV-242**

# Chain Guides

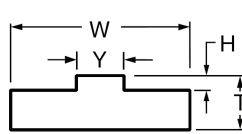
Supplied in white UHMW or other materials in lengths of 10 feet.



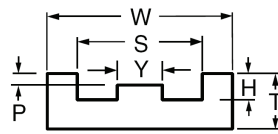
**Type 1**



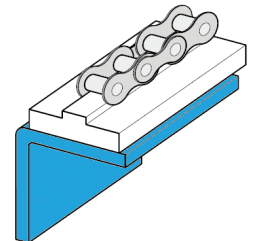
**Type 2**



**Type 5**



**Type 7**



Chain #	Type	T	W	H	S	P	Y
2040	1 & 2	5/16	1-1/4	1/8	7/8	-	-
	5	5/16	1	.080	-	-	1/4
	7	5/16	1	.140	11/16	.080	1/4
2050	1 & 2	3/8	1-1/4	5/32	1	-	-
	5	5/16	1-1/4	.100	-	-	5/16
	7	3/8	1-1/4	3/16	13/16	.100	5/16
2060	1 & 2	3/8	1-1/2	3/16	1-1/4	-	-
	5	5/16	1-1/4	.115	-	-	7/16
	7	1/2	1-1/2	.213	1-1/8	.115	7/16
2080	1 & 2	1/2	2	1/4	1-9/16	-	-
	5	3/8	1-1/2	.130	-	-	9/16
	7	1/2	2	1/4	1-7/16	.130	9/16