

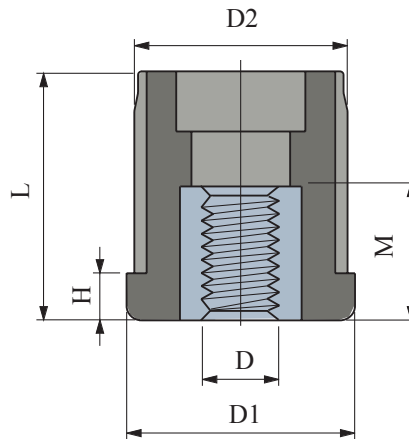
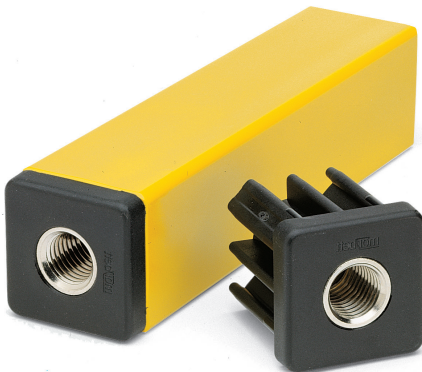
Stainless Steel Tube

Part # C1516SS10

Stainless steel, 1-1/2" square outside with 1/16" wall (16 gauge)
Available in 10 or 20 foot sections



Square Threaded Tube End



- Material : Bushing in reinforced polyamide PA FV (black). Threaded insert in nickel plated brass.

Tube Outside	Wall Thickness	Tube Inside	Thread Size D	D1	D2	H	L	M	Load Max	Code#
1-1/2"	0.065"	1.37"	1/2" unc	1.50	1.40	0.31	1.69	0.75	1125 lbs	224-59231
			5/8" unc	1.50	1.40	0.31	1.69	0.94	1125 lbs	224-59251
			1/2" unc	1.50	1.28	0.31	1.69	0.75	1125 lbs	224-61422
	0.120"	1.26"	5/8" unc	1.50	1.28	0.31	1.69	0.94	1125 lbs	224-61432
			3/4" unc	1.50	1.28	0.31	1.69	1.18	1800 lbs	224-661631
			1/2" unc	1.97	1.80	0.39	2.17	0.75	1125 lbs	224-61691
2"	0.109"	1.78"	5/8" unc	1.97	1.80	0.39	2.17	0.94	1125 lbs	224-59261
			3/4" unc	1.97	1.80	0.39	2.17	1.18	1800 lbs	224-59241
			M16	1.97	1.80	0.39	2.17	1.18	1800 lbs	224-63051
			1/2" unc	1.97	1.88	0.39	2.17	0.75	1125 lbs	224-692791
0.065"	1.85"	3/4" unc	1.97	1.88	0.39	2.17	0.75	1125 lbs	224-692811	

Maximum applicable load in static conditions.