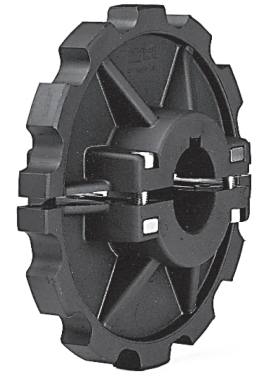
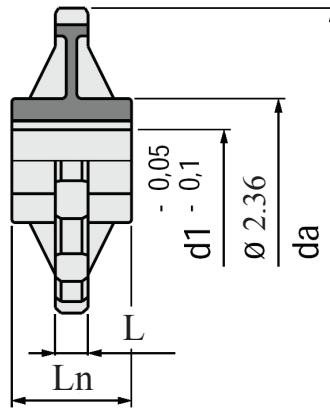
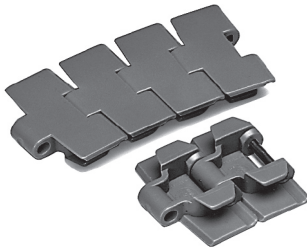


Split Sprocket #880, 880-Tab

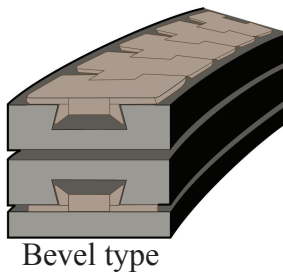
Material: Sprocket in reinforced polyamide (black).
Bolts in stainless steel AISI 304, nuts in nickel plated brass.

Chain #880-TAB

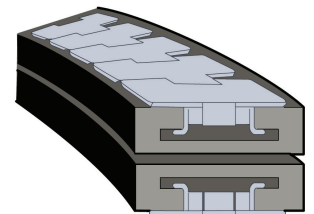
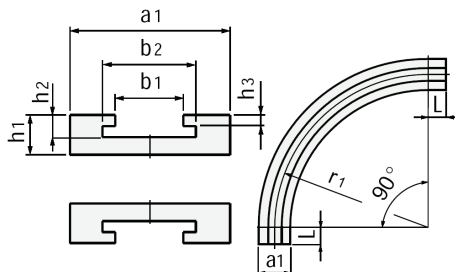


Part #	# Teeth	da	L	Ln	Bore d1
880-662171	10	4.82	0.625	2.30	stockbore
880-663201	12	5.80	0.625	2.30	1
880-663241	12	5.80	0.625	2.30	1-1/4
880-617553	12	5.80	0.625	2.30	1-1/2

Corner Tracks



Bevel type



TAB type

Materials

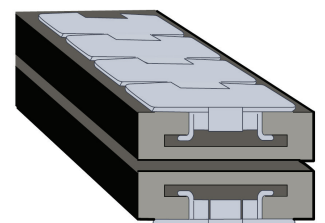
- **Black repro uhmw** : economical, wear resistant, Coef. 0.15/0.20
 - **Nylon MD** : high speed, long conveyors, heavy loads, Coef. 0.20
 - **Dry Lube** : wear resistant, no lubrication required, Coef. 0.10
 - **Oil filled** : Sticky, releases oil with friction, Coef. 0.06/0.12
- Contact CRS/VAMIC for more details.

HOW TO ORDER:

Specify :

- Chain Type and width (a) Ex: #880, 4-1/2
- Style (b) Ex: Tab
- Radius dimension (c) Ex: 24"
- Number of lanes (d) Ex: Double lane
- Angle (e) Ex: 45o
- Material (f) Ex: Black UHMW
- Thickness and width of track (g) Ex: 1" x 10"

Straight Tracks



Straight tracks are available. Please specify length required.