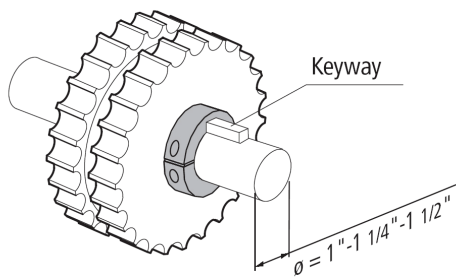
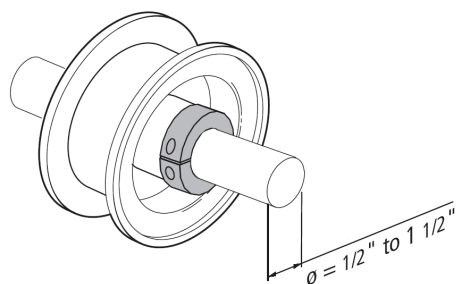


Split Shaft Collars

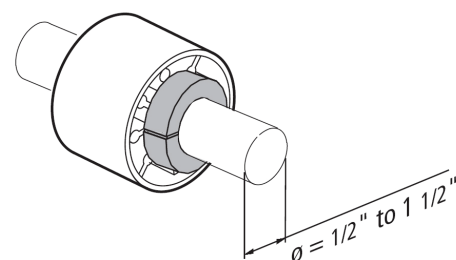
- With sprockets



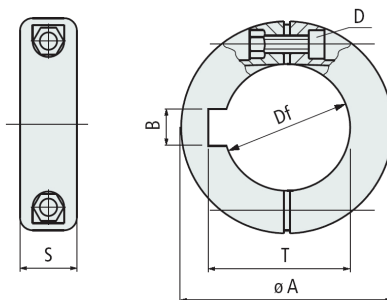
- With idler wheels



- With rollers



Split shaft collar supplied in black polyamide with stainless steel hardware. Smaller size of 1/2 and 3/4 are supplied without keyway. 1", 1-1/4" and 1-1/2", keyway is optional.



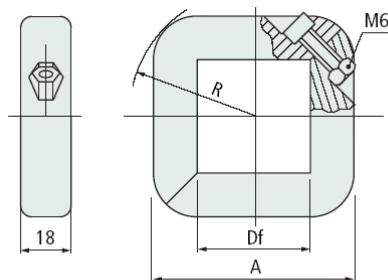
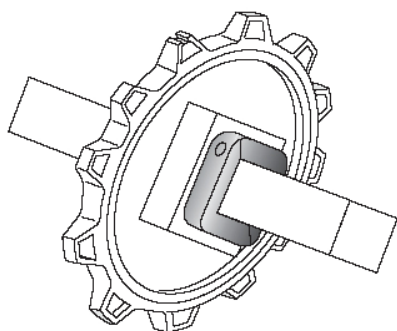
Code	Df	A	B	D	S	T
612-655072	1/2	1.18	-	M4	0.46	-
612-655102	3/4	1.57	-	M4	0.55	-
612-608453	1	1.77	-	M4	0.55	-
612-655112	1	1.77	0.25	M4	0.55	1.13
612-608463	1-1/4	1.97	-	M4	0.63	-
612-655122	1-1/4	1.97	0.25	M4	0.63	1.38
612-611283	1-1/2	2.50	-	M5	0.71	-
612-655132	1-1/2	2.50	0.38	M5	0.71	1.68

Maximum recommended tightening torque is: 26 in lb

Split Shaft Collars Square Bore

Perfect solution for modular belt sprockets

Split shaft collar for square shafts are supplied in with stainless steel hardware



- Version in reinforced Polyamide PA FV gives better resistance at high temperatures.
- Version in reinforced Polypropylene PP FV gives better resistance against chemical agents.

Code	Material	Df	A	R
612-10C *	Blue polypro	1	2	1.05
612-692942 *	Black polyamide	1-1/2	2.83	1.73
612-689842 *	Black polypro	1-1/2	2.83	1.73
612-689872 *	Black polypro	2-1/2	3.74	2.28

Maximum recommended tightening torque is: 26 in lb

*Not suitable for certain sprocket diameters.

Consult CRS/VAMIC Inc. for additional information prior to ordering.