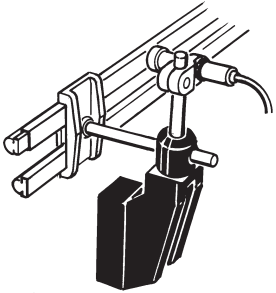


Adjustable Head

Application Example

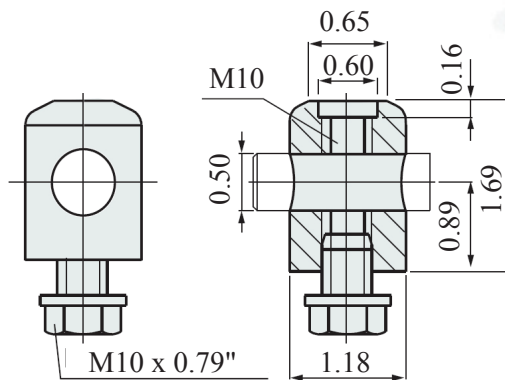
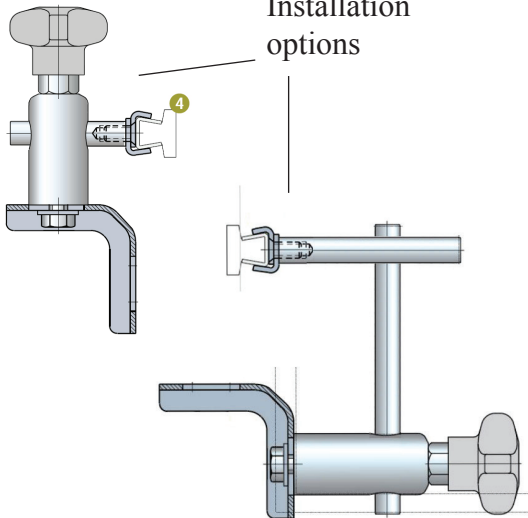


Swivel head #192, supplied in stainless steel AISI 303, with stainless steel hardware. Bored to fit 1/2" rods. Can be used with knob 185-53081. Can be installed on top of bracket 632-647142 or 648-653112.

Part # 192-608683



Installation options



Knob

Part # 185-53081

Hand knob
Supplied in black polyamide with spindle in nickel plated brass.
Can be used with head #192.



Parts 192-608683 and 185-53081 shown.

