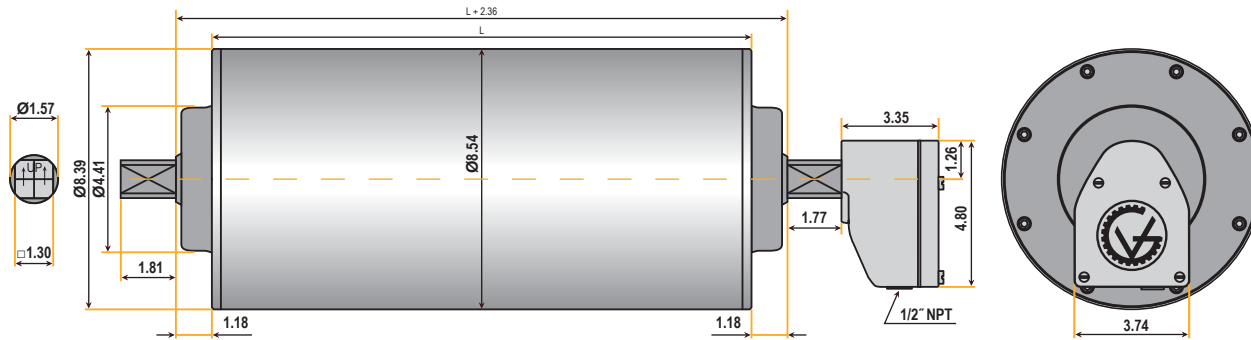


# TM215 SERIES (8.5" diameter)



## DIMENSIONS (in inches)

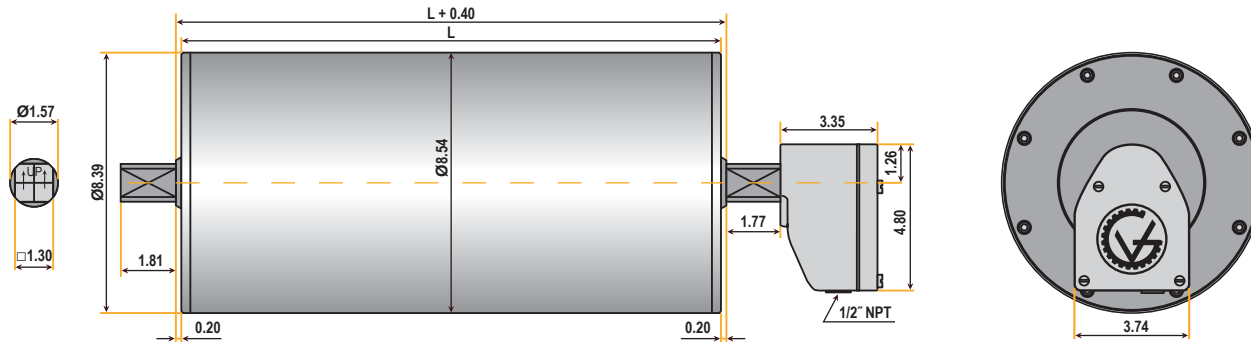
### TM215A40 Drum Motor (matching Idler KT215A40\*\*)



Standard face widths\* (L) in inches:

16.73	17.72	19.69	21.65	23.62	25.59	27.56	29.53	31.50
33.46	35.43	37.40	39.37	41.34	43.31	45.28	47.24	

### TM215B40 Drum Motor (matching Idler KT215B40\*\*)



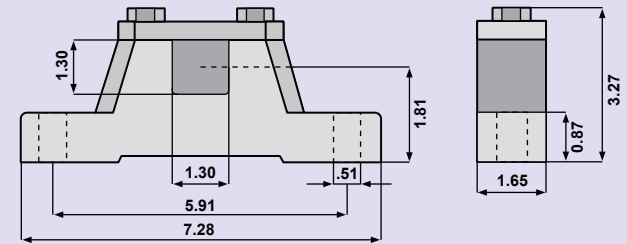
Standard face widths\* (L) in inches:

19.69	21.65	23.62	25.59	27.56	29.53	31.50	33.46	35.43
37.40	39.37	41.34	43.31	45.28	47.24			

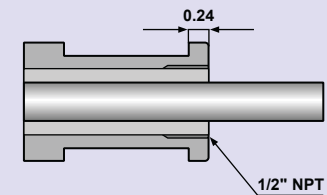
\*Some face widths are not available in all horsepower. For minimum available face widths refer to TM215 Specifications.

\*\*Idler dimensions are identical to the drum motor with no junction box.

### Bracket AB 40



### Optional Cable Type



Note: When Optional Cable Type is selected, the minimum face width (L) increases by 1.969 inches.

# TM215 SERIES (8.5" diameter)



## SPECIFICATIONS

### 7.5 HP

<b>V (ft/min) M/G</b>	1117 2/S2	912 2/S2	821 2/S2	657 2/S2	583 2/S2	547 2/S3	465 2/S2	403 2/S2	358 2/S2	335 2/S2	310 2/S2	255 2/S2	228 2/S3	142 2/PL2	129 2/PL2
<b>Belt Pull (lbs)</b>	198	243	270	337	285	405	476	549	618	662	715	651	972	1559	1714
<b>Drum RPM</b>	504	412	371	297	263	247	210	182	162	151	140	115	103	64	58

### 5.0 HP

<b>V (ft/min) M/G</b>	1117 2/S2	912 2/S2	821 2/S2	657 2/S2	583 2/S2	547 2/S3	465 2/S2	403 2/S2	358 2/S2	335 2/S2	310 2/S2	275 4/S3	255 2/S2	238 2/S2	234 4/S2
<b>Belt Pull (lbs)</b>	162	198	220	275	310	331	389	449	506	540	584	598	710	760	703
<b>Drum RPM</b>	503	411	370	296	263	246	209	182	161	151	140	124	115	107	105
<b>V (ft/min) M/G</b>	228 2/S3	221 2/S3	202 4/S3	198 2/S3	162 2/S3	142 2/PL2	129 2/PL2	114 4/S3	71 4/PL2	65 4/PL2					
<b>Belt Pull (lbs)</b>	794	819	815	914	1117	1275	1403	1443	2317	2531					
<b>Drum RPM</b>	103	100	91	89	73	64	58	51	32	29					

### 3.0 HP

<b>V (ft/min) M/G</b>	679 4/S2	559 4/S2	483 4/S2	398 4/S2	325 4/S2	293 4/S2	233 4/S2	234 4/S2	208 4/S2	202 4/S2	166 4/S2	155 4/S2	144 4/S2	128 4/S2	119 4/S2
<b>Belt Pull (lbs)</b>	130	158	183	222	272	302	379	377	425	437	533	569	614	692	741
<b>Drum RPM</b>	307	253	218	180	147	132	105	106	94	91	75	70	65	58	54
<b>V (ft/min) M/G</b>	114 4/S3	99 4/S3	81 4/S3	71 4/PL2	70 4/S3	65 4/PL2	63 4/S3	47 6/PL2	43 6/PL2						
<b>Belt Pull (lbs)</b>	774	893	1087	1241	1254	1365	1412	1887	2075						
<b>Drum RPM</b>	52	45	37	32	32	29	28	21	19						

### 2.0 HP

<b>V (ft/min) M/G</b>	685 4/S2	564 4/S2	488 2/S2	402 4/S2	376 6/S2	328 4/S2	295 4/S2	236 4/S2	210 4/S2	204 4/S2	197 6/S2	185 4/S2	167 4/S2	157 6/S2	145 4/S2
<b>Belt Pull (lbs)</b>	82	99	115	140	164	171	190	237	267	275	314	304	335	394	386
<b>Drum RPM</b>	309	255	220	181	170	148	133	107	95	92	89	83	76	71	65
<b>V (ft/min) M/G</b>	136 6/S2	129 4/S2	120 4/S2	111 4/S2	104 6/S2	97 6/S2	86 6/S2	77 6/S3	71 4/S3	67 6/S3	55 6/S3	48 6/PL2	47 6/S3	44 6/PL2	
<b>Belt Pull (lbs)</b>	455	435	466	503	592	639	719	805	789	928	1131	1291	1304	1419	
<b>Drum RPM</b>	61	58	54	50	47	44	39	35	32	30	25	22	21	20	

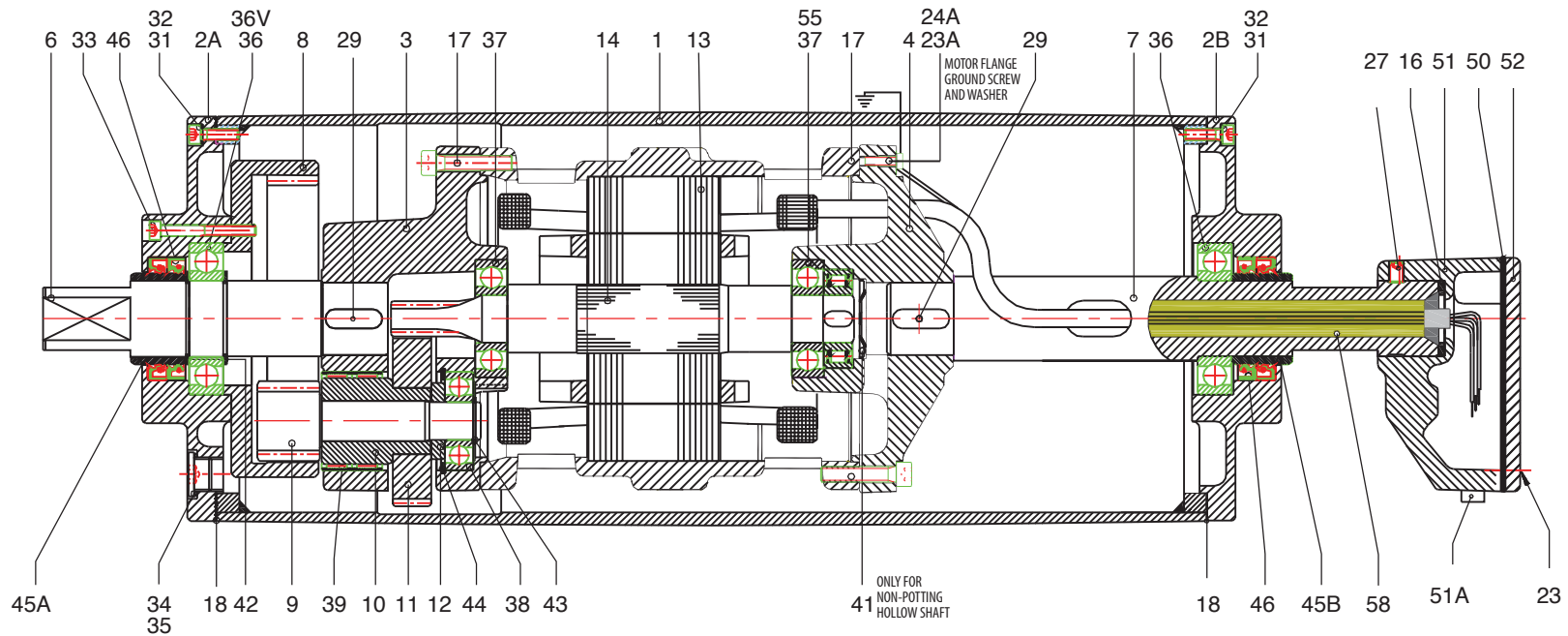
**V** = Belt Speed (ft/min)

**M/G** = Motor/Gear Reducer Configuration (at rated horsepower)

High Speed  
Low Torque



Low Speed  
High Torque



ITEM	PART DESCRIPTION	ITEM	PART DESCRIPTION	ITEM	PART DESCRIPTION	ITEM	PART DESCRIPTION
1	Shell	18	Gasket	38	Ball Bearing	58	Epoxy Resin
2A	End Flange	23	Fillister head Machine Screw	39	Needle Bearing		
2B	End Flange	23 A	M5X10 Slot Cheese HD Screw	41	Disc		
3	Gear Housing	24	Fillister head Machine Screw	42	Snap Ring		
4	Motor Flange	24 A	Washer	43	Snap Ring		
6	Shaft End	27	Set Screw	44	Snap Ring		
7	Hollow Shaft	29	Key	45 A	Bearing race		
8	External Gear	31	Socket Head Cap Screw	45 B	Bearing race		
9/10	Pinion With Bushing	32	Bonded Seal Washer	46	Oil Seal		
11	Gear	33	Socket Head Cap Screw	50	Nitrile Seal		
12	Distance Ring	34	Filler Plug	51	Junction Box		
13	Stator	35	Washer	51 A	Plug		
14	Rotor	36	Ball Bearing	52	Junction Box Cover		
16	Nitrile Gasket	36V	Cylindrical Bearing	55	Backstop Bearing (Optional)		
17	Internal Hex. Screw	37	Ball Bearing	57	Name Plate		