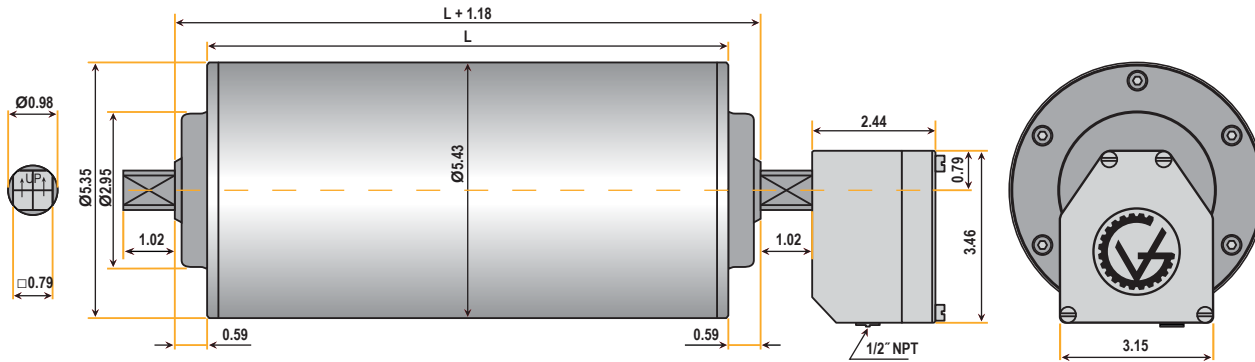


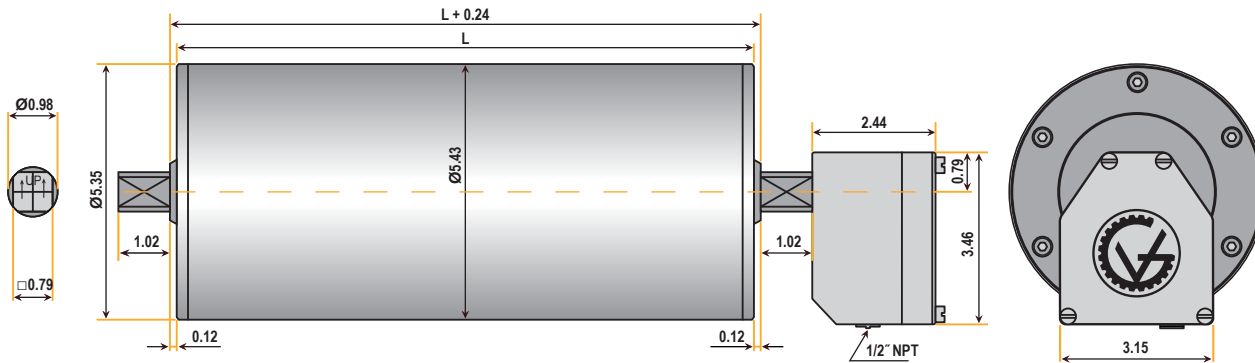
TM138A25 Drum Motor (matching Idler KT138A25)**



Standard face widths* (L) in inches:

9.84	10.83	11.81	13.78	15.75	17.72	19.69	21.65	23.62
25.59	27.56	29.53	31.50	33.46	35.43	37.40	39.37	41.34
43.31	45.28	47.24						

TM138B25 Drum Motor (matching Idler KT138B25)**



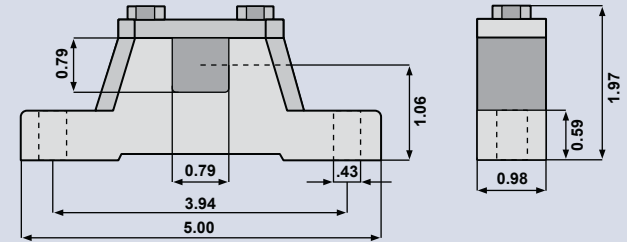
Standard face widths* (L) in inches:

10.83	11.81	13.78	15.75	17.72	19.69	21.65	23.62	25.59
27.56	29.53	31.50	33.46	35.43	37.40	39.37	41.34	43.31
45.28	47.24							

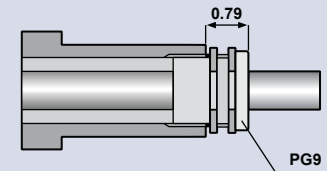
*Some face widths are not available in all horsepower. For minimum available face widths refer to TM138 Specifications.

**Idler dimensions are identical to the drum motor with no junction box.

Bracket AB 25



Optional Cable Type



Note: When Optional Cable Type is selected, the minimum face width (L) increases by 1.969 inches.

1.5 HP

V (ft/min) M/G	343 4/S2	258 4/S2	218 4/S2	135 4/S2
Belt Pull (lbs)	156	208	246	398
Drum RPM	242	181	154	95

1.0 HP

V (ft/min) M/G	702 2/S2	526 2/S2	447 2/S2	343 4/S2	258 4/S2	218 4/S2	160 4/S2	135 4/S2	120 4/S2	79 4/PL2	63 4/PL2	53 4/PL2	41 4/PL2
Belt Pull (lbs)	51	68	80	104	139	164	224	266	299	451	568	672	767
Drum RPM	494	370	315	242	181	154	112	95	84	56	44	37	29

0.75 HP

V (ft/min) M/G	707 2/S2	530 2/S2	450 2/S2	356 4/S2	267 4/S2	227 4/S2	165 4/S2	146 4/S3	124 4/S2	105 4/S2	95 6/S2	80 6/S2	67 4/S3	61 4/S3	54 4/PL2
Belt Pull (lbs)	38	51	60	75	100	118	162	184	217	255	284	334	398	441	494
Drum RPM	498	373	317	251	188	160	116	103	87	74	67	57	47	43	38

V (ft/min) M/G	43 4/PL2
Belt Pull (lbs)	617
Drum RPM	31

0.5 HP

V (ft/min) M/G	349 4/S2	262 4/S2	223 4/S2	162 4/S2	142 4/S2	106 4/S2	90 4/S2	70 6/S2	59 4/S3	45 4/S3	42 4/PL2	36 6/PL2	28 6/PL2
Belt Pull (lbs)	51	68	80	111	126	168	198	257	305	402	422	499	633
Drum RPM	246	184	157	114	100	75	64	49	41	31	30	25	20

0.34 HP

V (ft/min) M/G	350 4/S2	262 4/S2	223 4/S2	162 4/S2	142 4/S2	108 4/S2	91 4/S2	66 4/S3	59 4/S3	45 4/S3
Belt Pull (lbs)	35	46	55	75	85	113	133	184	207	273
Drum RPM	246	184	157	114	100	76	64	47	41	31

0.25 HP

V (ft/min) M/G	12 4/PL3	9 4/PL3	8 4/PL3	6 4/PL3
Belt Pull (lbs)	742	767	767	767
Drum RPM	8	7	6	4

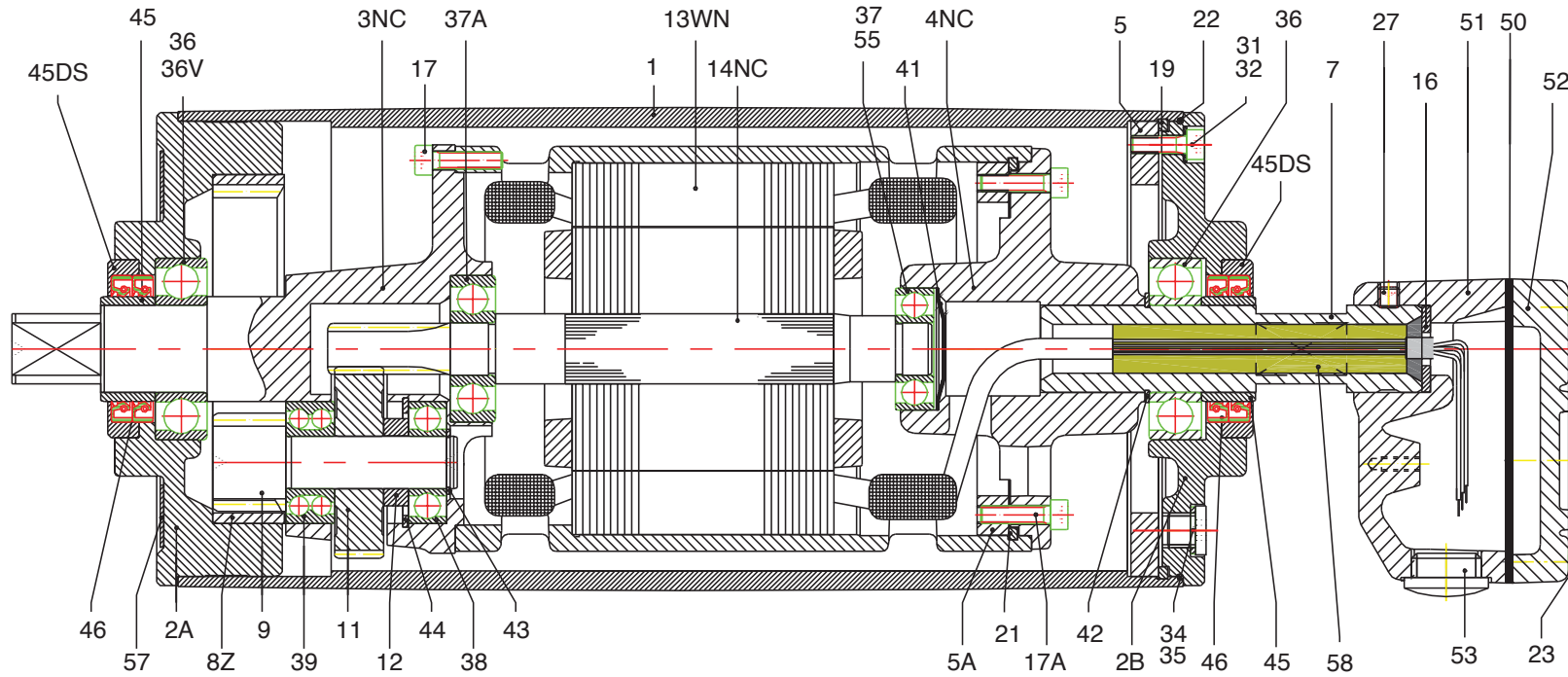
V = Belt Speed (ft/min)

M/G = Motor/Gear Reducer Configuration (at rated horsepower)

High Speed
Low Torque



Low Speed
High Torque



ITEM	PART DESCRIPTION	ITEM	PART DESCRIPTION	ITEM	PART DESCRIPTION	ITEM	PART DESCRIPTION
1	Shell	17	Socket Head Cap Screw	38	Ball Bearing	58	Epoxy Resin
2A	End Flange	17A	Socket Head Cap Screw	39	Needle Bearing		
2B	End Flange	19	Spring Ring	41	Disc		
3NC	Gear Housing	21	Spring Ring	42	Snap Ring		
4NC	Motor Flange	22	O-Ring	43	Snap Ring		
5	Mounting Ring	23	Fillister head Machine Screw	44	Snap Ring		
5A	Mounting Ring	27	Set Screw	45	Bearing race		
7	Hollow Shaft	31	Socket Head Cap Screw	45 DS	Double Seal Adapter		
8Z	Internal Gear	32	Bonded Seal Washer	46	Oil Seal		
9/10	Pinion with Bushing	34	Filler Plug	50	Seal		
11	Gear	35	Washer	51	Junction Box		
12	Distance Ring	36	Ball Bearing	52	Junction Box Cover		
13WN	Stator	36 V	Cylindrical Roller Bearing	53	Plug		
14NC	Rotor	37	Ball Bearing	55	Backstop Bearing - Optional		
16	Nitrile Gasket	37 A	Ball Bearing	57	Data Plate		